

Adventure Bound 27 foot boat in Warm Springs Rapid



Georgie White – Grand Canyon





ARTA Sierra Club Trip – Glen Canyon

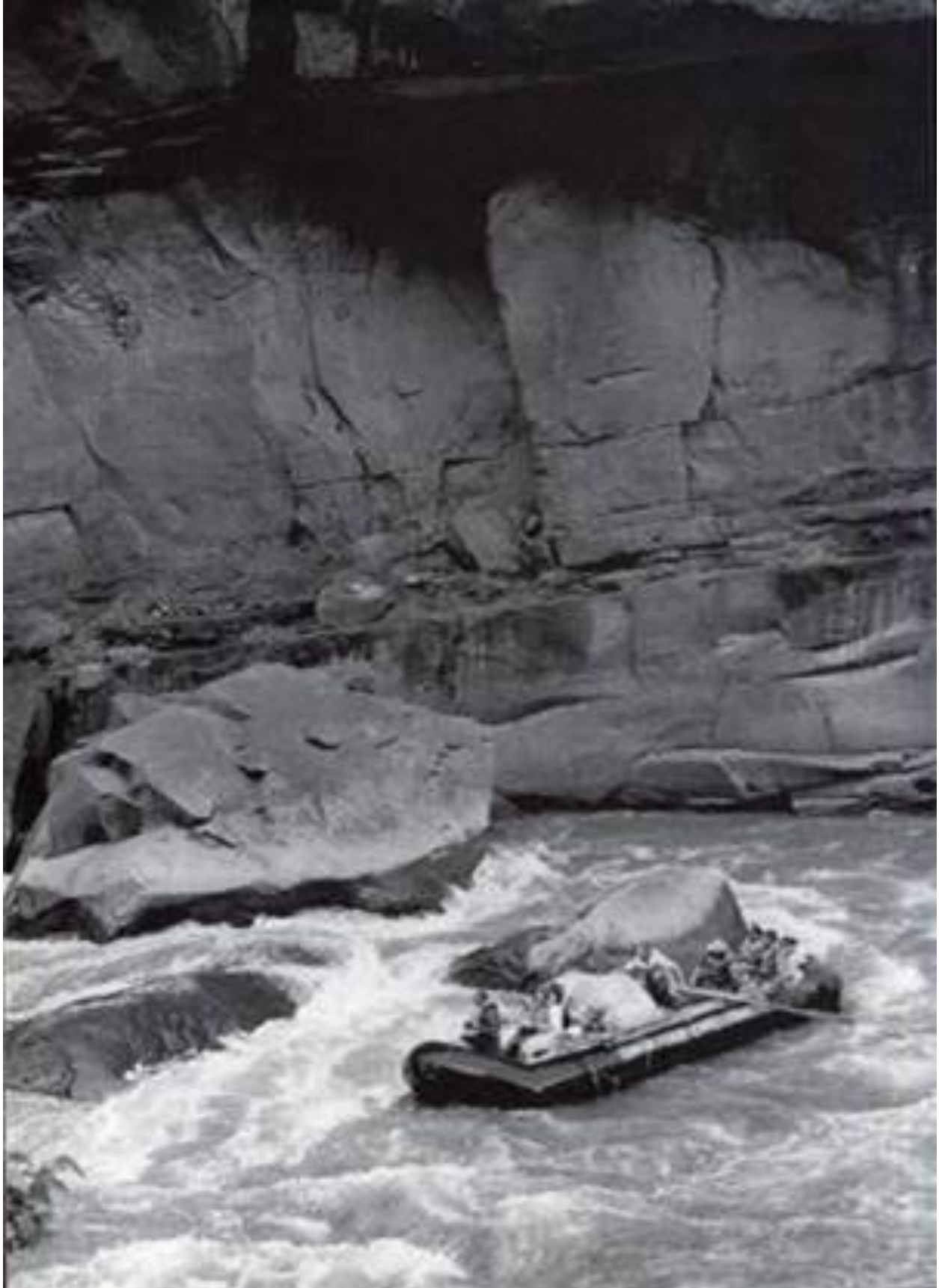




ARTA - 33' Pontoon w 2 sponsons outside & one inside (Lou Elliot) NPS



1970 Hatch Triplett Falls Lodore {G. Henry Photo}



Hatch - 38' Hells Half Mile in



Dinosaur National Monument Hatch - Single 33' Tail Dragger – Grand Canyon National Park



Cross River Tours - 33' with 2 outriggers – Grand Canyon National Park



Grand Canyon Expeditions – Ron Smith’s “S-Rig” - Grand Canyon National Park



Sanderson – “S Rig” (Jerry Sanderson) NPS



John Hatch with a refurbished 33' Hatch pontoon



Utah Department of Wildlife Resources Loading Fish at Flaming Gorge
(A Belgian-made pontoon)



2014, Split Mountain Canyon Whirlpool Canyon



