



moab 70088
INCOMING
RECEIVED

SEP 28 2018

DIV. OF OIL, GAS & MINING

YOU ARE INVITED – PROGRESSING FROM EXPLORATION TO DEVELOPMENT

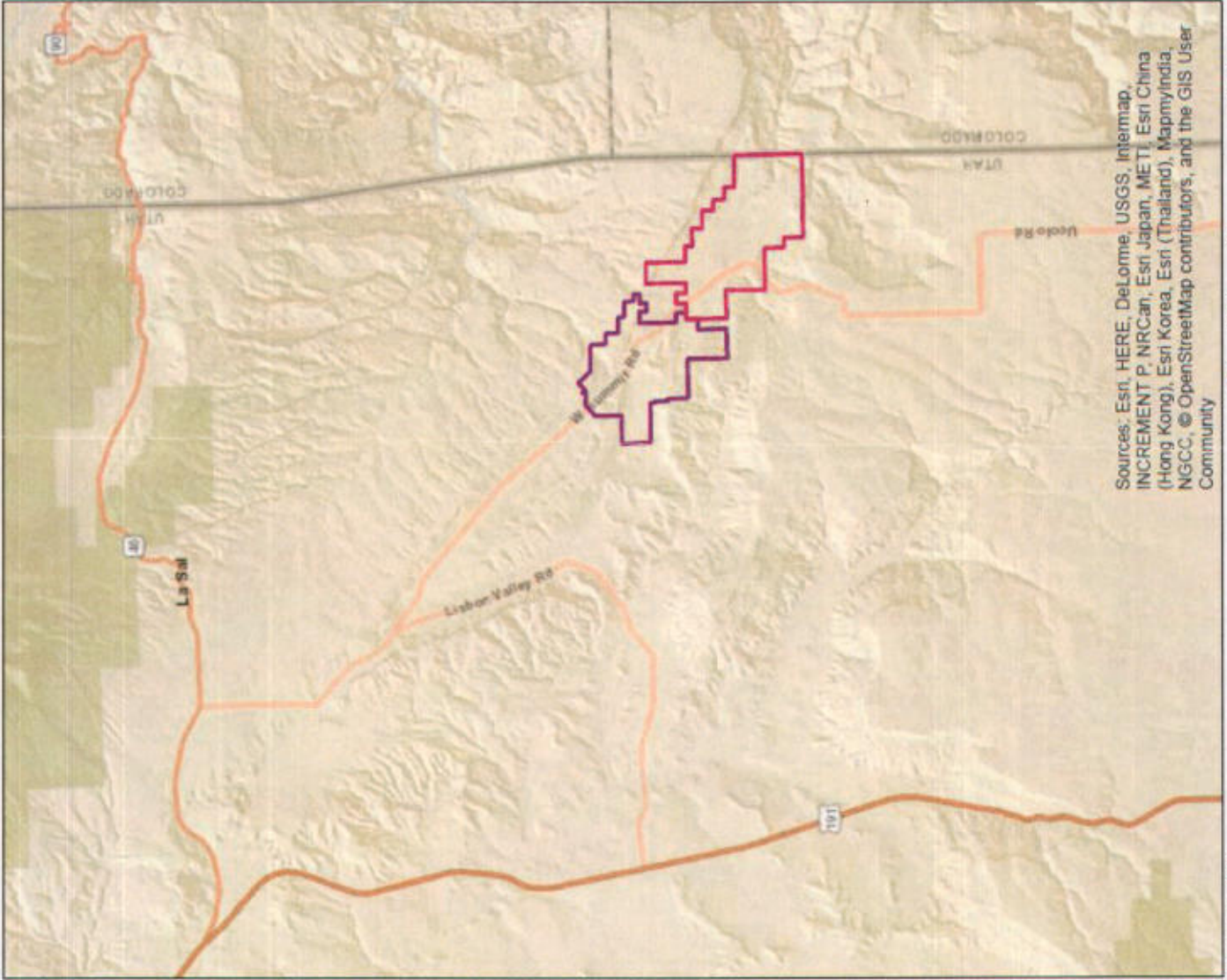
EVENT: Lisbon Valley Mining Company, LLC (LVMC) is hosting a Public Outreach meeting on Wednesday, October 24, at 6:00 PM MST at the Hideout Golf Club, in Monticello Utah.

LOCATION: Hideout Golf Club, 648 South Hideout Way, Monticello, UT 84535

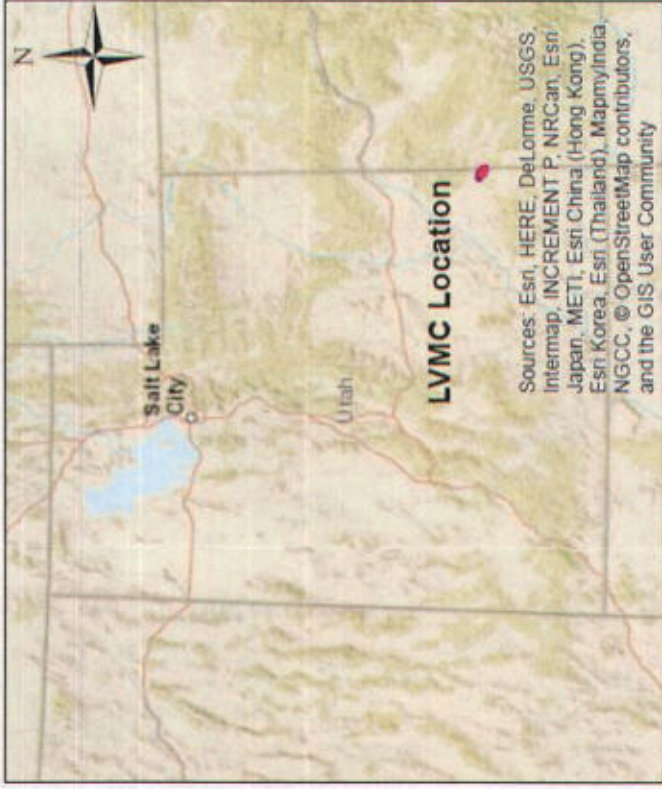
PURPOSE: LVMC is considering an expansion of existing operations and is seeking your input on what should be considered during the environmental review for longer-term permitting. LVMC has been actively mining and processing copper-bearing ores within their +4,400 acre mine boundary for over nine years. The mine boundary was first approved in the BLM's 1997 Record of Decision (UTU-72499). The expansion would occur in Lower Lisbon Valley, directly southeast of LVMC's existing mining and processing operations. The Lower Lisbon Valley consists of a project boundary of approximately 5,300 acres, which is currently covered under a Plan of Operations for Exploration Activities with the BLM (UTU-77879). The expansion would prospectively allow more copper minerals to be processed by the existing project facilities, which means more job creation for the local communities. A longer mine life means longer-term stability for employees and vendors. The Lower Lisbon Valley has been actively explored for almost 15 years, and LVMC is excited about exploring, developing, and expanding the mineral potential for years to come for the benefit of all project constituents.

Lisbon Valley Mining Company, LLC or it's affiliates do not attest to the accuracy of any statements made herein. The purpose of this invitation and attached map are to provide the public with general information only. Nothing within this document or map can be construed as legally binding, nor is being represented as such.

Lisbon Valley Mining Company LLC
755 N. Main Street, Suite B - PO Box 400 - Moab, UT 84532
[P] (435) 259-6910 [F] (435) 686-2223



Drawn By: ADT
 Date: September 21, 2018



Lisbon Valley Mining Company, LLC Location of Active and Proposed Activities

- LVMC_Active_Project_Boundary(+4,400ac)
- LVMC_LLVM_Proposed_Boundary(~5,300ac)*

*This represents the approximate LLV Proposed Boundary. This boundary is also the approximation of the current Exploration Boundary, approved by the Utah Division of Oil, Gas and Mining, SITLA, and BLM. Some private lands reside within the approximate boundary which may or may not be included in any final boundary or in any exploration campaigns.

The purpose of this map is to provide general location information only. LVMC does not attest to the accuracy or inaccuracy of any included boundaries, acreages, roads, or otherwise.

