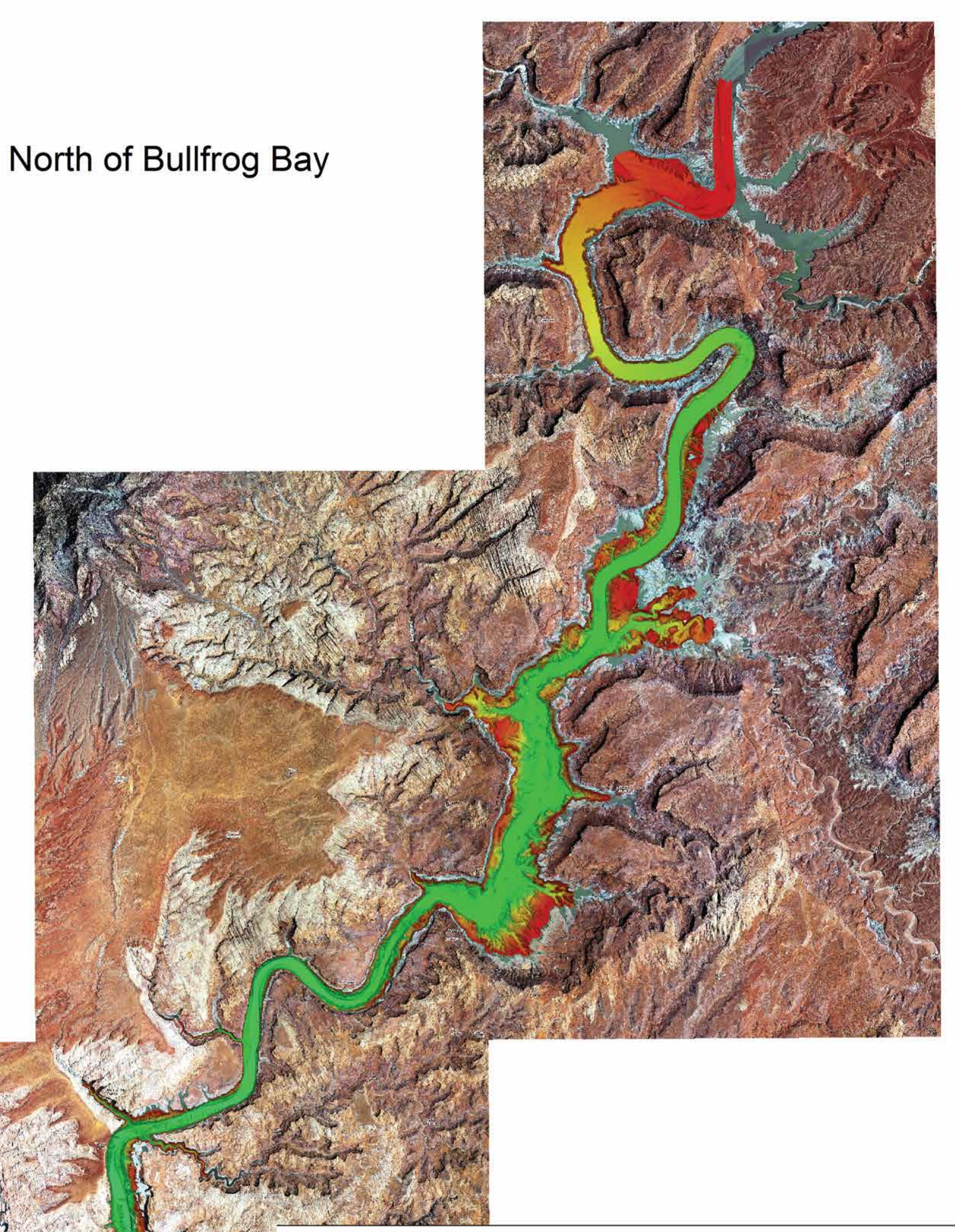
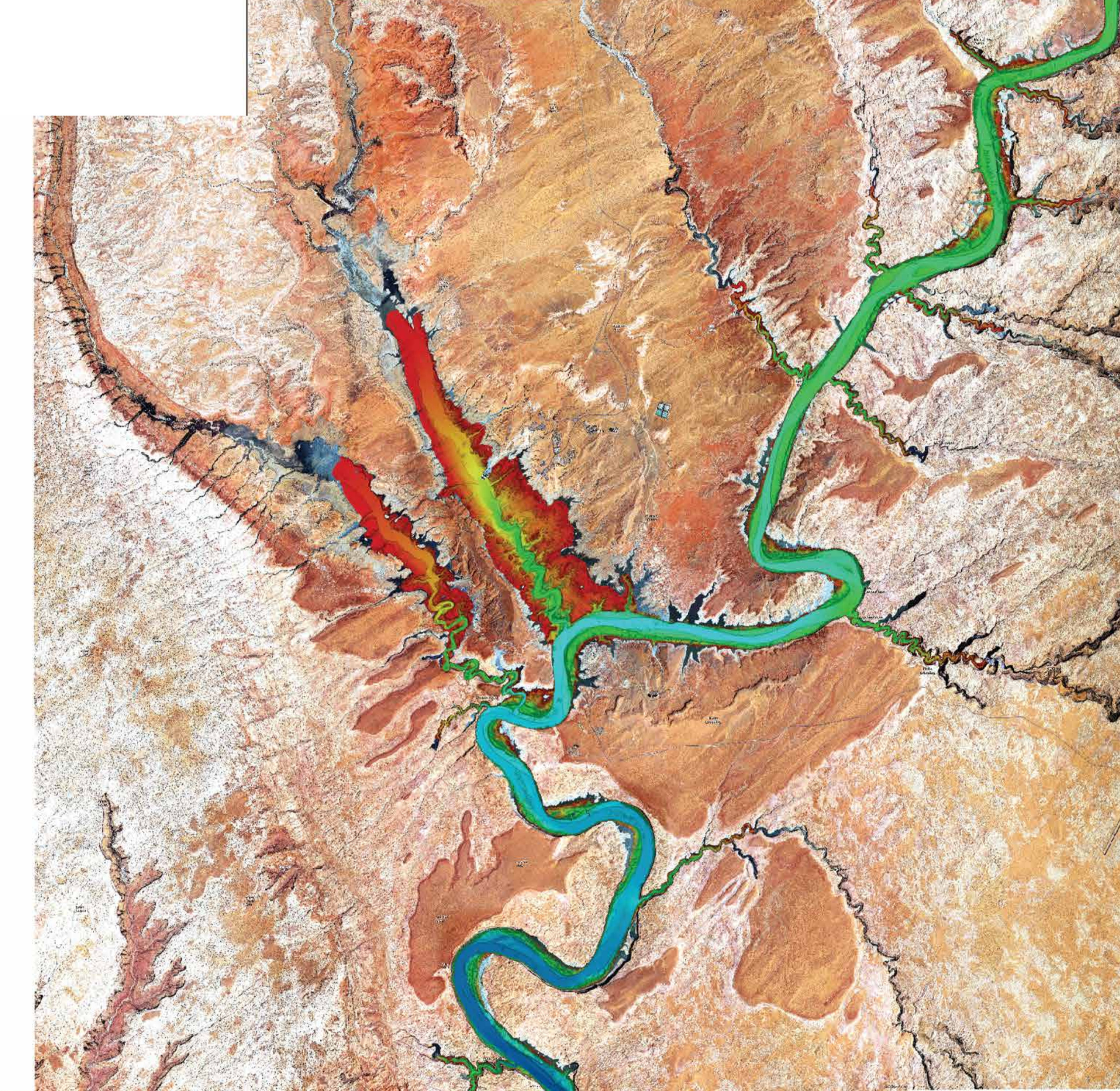


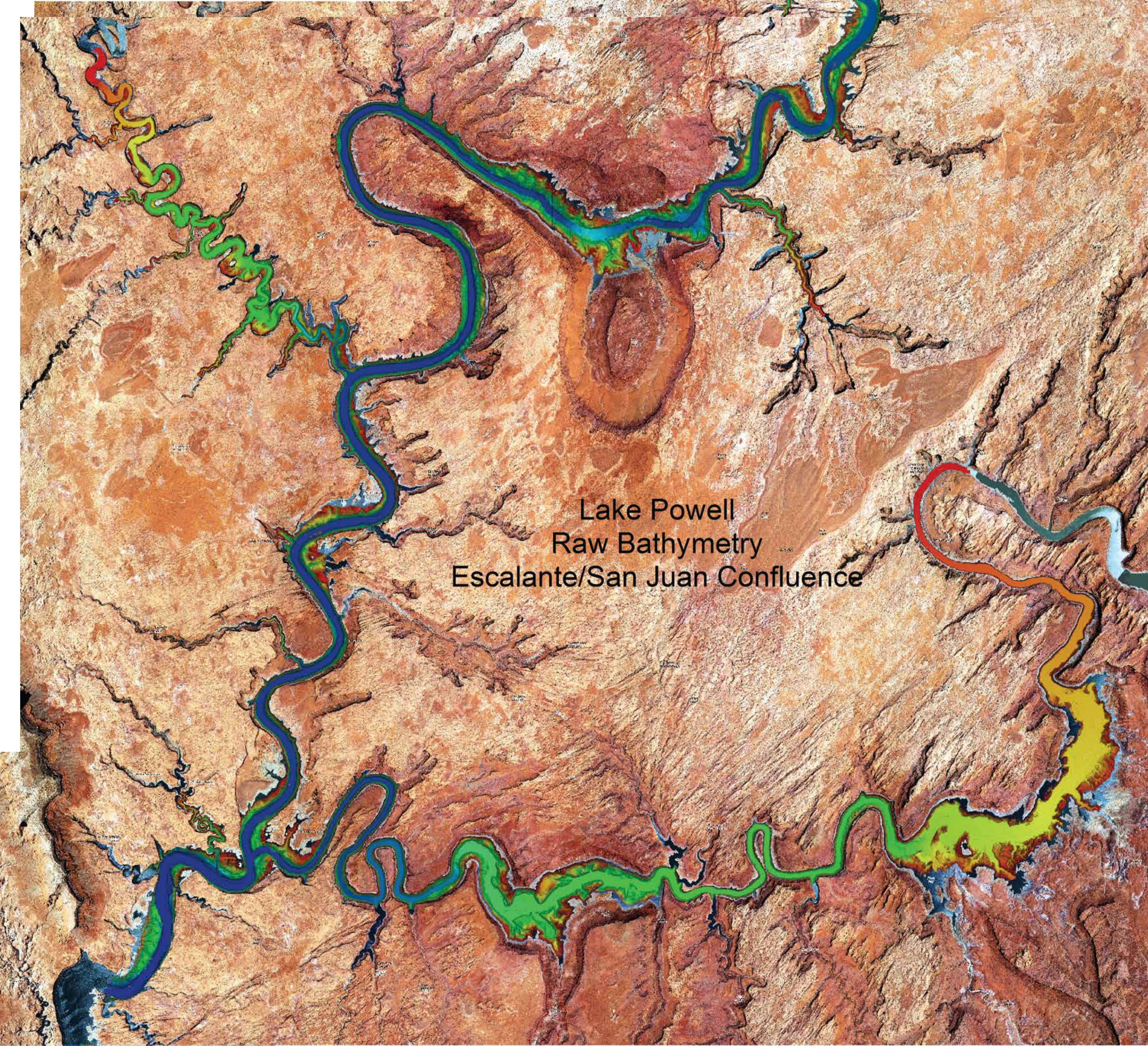
Lake Powell Raw Bathymetry - North of Bullfrog Bay



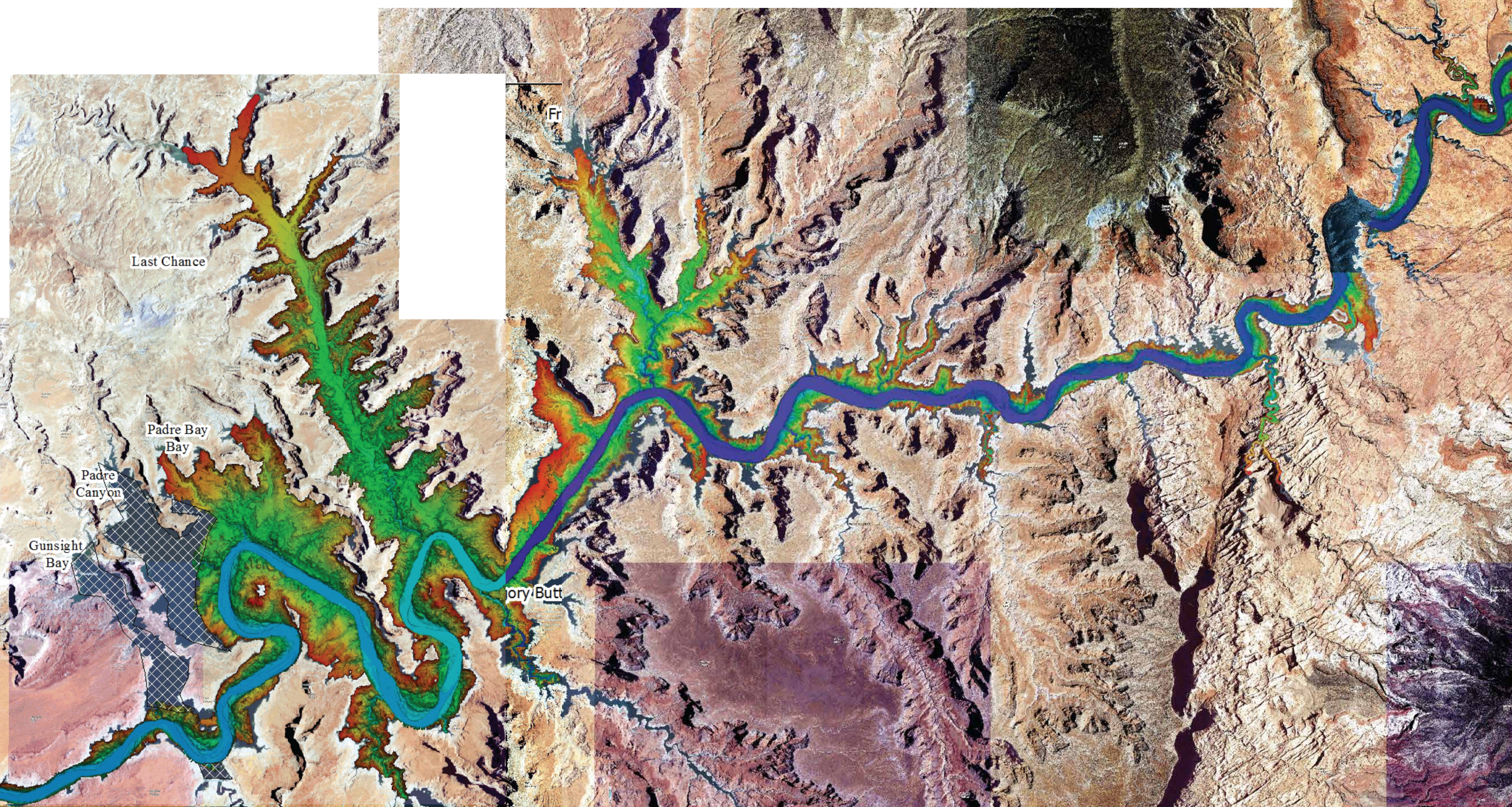
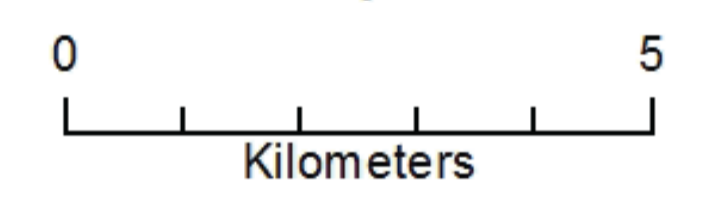
Lake Powell Raw Bathymetry Halls Crossing area



Lake Powell Raw Bathymetry Escalante/San Juan Confluence



Lake Powell Survey Status  
USGS Survey 2017-049-FA  
As of end of survey day, Monday 6 Nov 17  
white cross-hatch are areas remaining  
We are working in Padre Canyon, and Gunsight Bays today



Lake Powell Raw Bathymetry San Juan to Lost Creek

