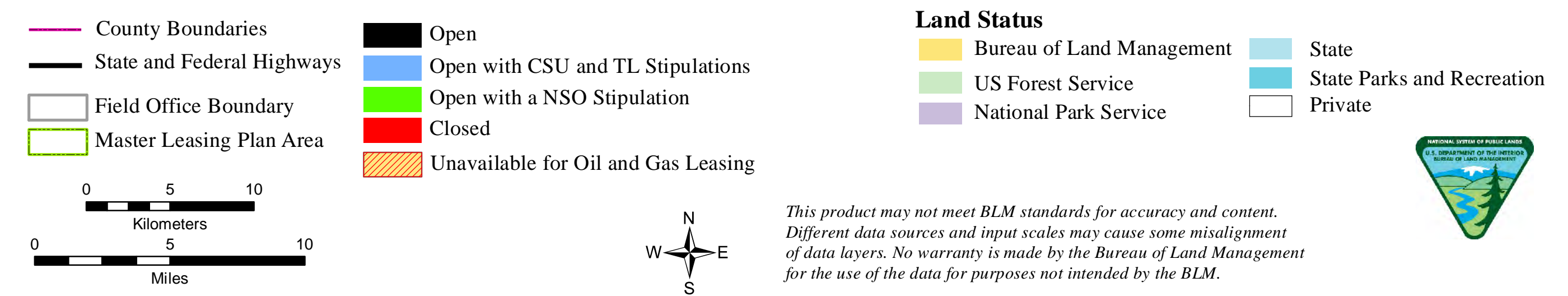
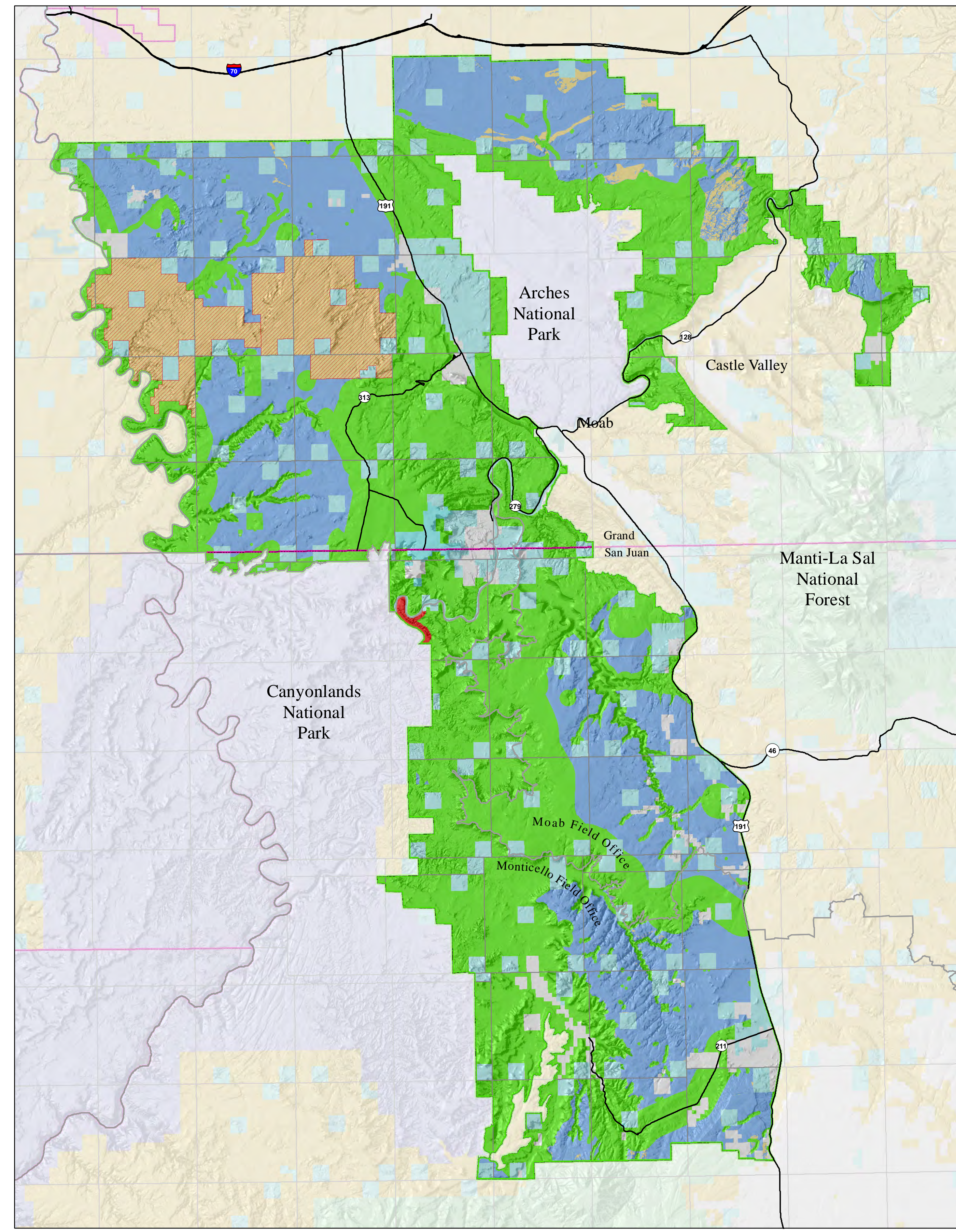


Oil and Gas Leasing Stipulations - Preliminary Alternative B2



This product may not meet BLM standards for accuracy and content. Different data sources and input scales may cause some misalignment of data layers. No warranty is made by the Bureau of Land Management for the use of the data for purposes not intended by the BLM.

Moab Master Leasing Plan - Preliminary Alternative B2

Definitions for Mineral Lease Stipulations				
Controlled Surface Use (CSU)	Timing Limitation (TL)	No Surface Occupancy (NSO)	Open	Closed
Areas identified with a CSU stipulation are open to mineral leasing but identified resource values require special operation constraints.	Areas identified with a TL stipulation are open to mineral leasing but surface use during specified time periods is prohibited to protect identified resource values.	Areas identified with a NSO stipulation are open to mineral leasing but use or occupancy of the surface for exploration and mineral development is prohibited in order to protect identified resource values. The minerals under NSO lands may potentially be developed by directionally or horizontally drilling from nearby lands that do not have the NSO limitation.	Areas open to mineral leasing are subject to existing laws, regulations, and formal orders; and the terms and conditions of the standard lease form.	Areas identified as closed are not open to mineral leasing.

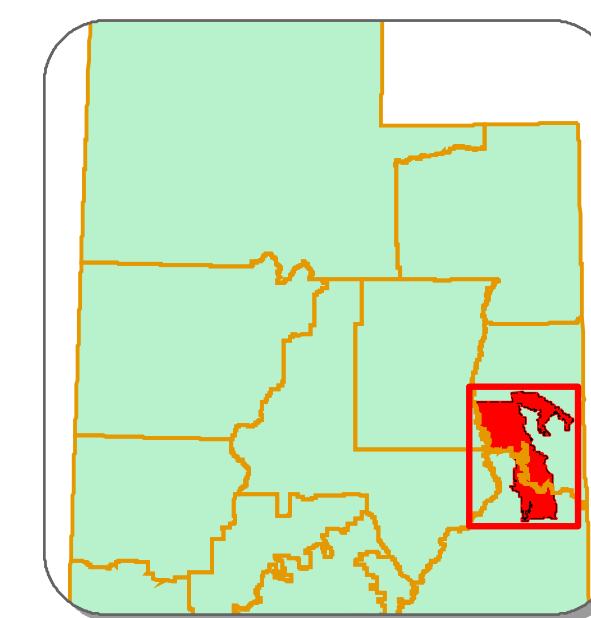
Resources Resulting in Proposed Stipulations for the MLP		
Alternative B		
NSO	CSU/TL	Baseline CSU *
Public rock art sites	Air quality	Selected Lands with Wilderness Characteristics
Developed recreation sites	Trucks on Needles and Anticline Overlook roads	SRMAs
High use recreation routes	Filming locations	Courthouse Watershed
High use climbing/canyoneering sites	Paleontology	Sagebrush/steppe habitat in very high to moderately high ecological intactness
Focus Areas within Special Recreation Management Areas (SRMAs) (with the exception of Dee Pass Motorized Focus Area)	Saline soils	VRI II in VRM III areas
Visual Resource Management (VRM) II areas	Slopes over 20%	Crucial deer and elk habitat
Visual Resource Inventory (VRI) II areas around Arches National Park	Important spring clusters	Bighorn sheep habitat
Colorado Riverway SRMA	Old Spanish Trail (National Historic Trail)	
Dolores River Canyons SRMA	Special Status Animal Species	
Groundwater Protection Zones	Special Status Plant Species	
Floodplains, intermittent and perennial streams, rivers, riparian areas, wetlands, water wells, lakes, and springs	Wildlife	
Colorado and Green River	Sagebrush/steppe habitat in very low to moderately low ecological intactness	
Areas of Critical Environmental Concern		
Suitable Wild and Scenic Rivers		
State of Utah Scenic Driving Corridors		
Three Rivers Withdrawal		
Moab utility corridor		
Moab airport and landfill		
Dead Horse State Park (split estate)		

* Alternative B: Baseline CSU

The Baseline CSU stipulation would reduce conflicts in areas with heavy recreation use, reduce the impacts to wilderness values, reduce visual intrusions, and reduce loss of wildlife habitat and consists of the following:

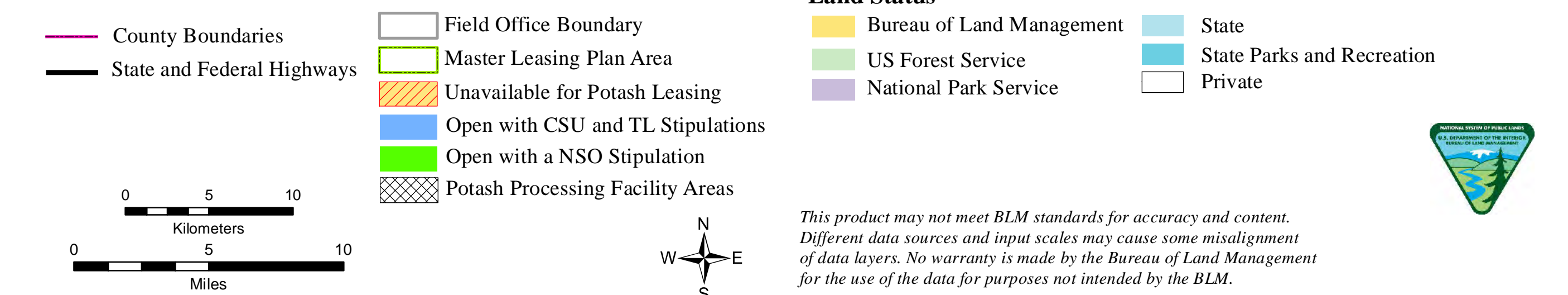
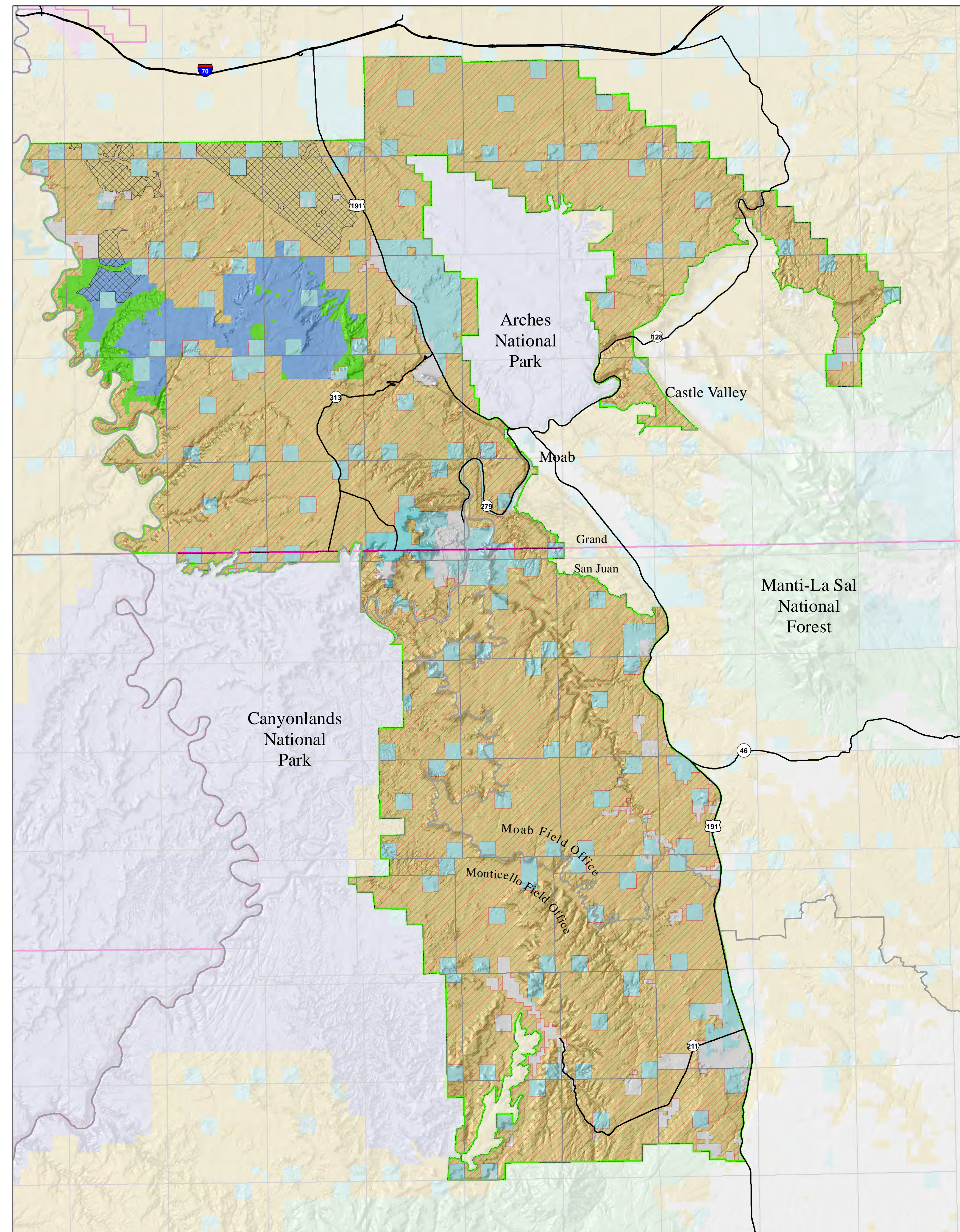
- Multiple wells per pad as appropriate.
- Well pads spaced an average of 2 miles apart.
- Production facilities would be co-located and designed to minimize surface impacts. Pipelines and utilities would be placed along existing roads.
- Limit un-reclaimed surface disturbance to 15 acres per well pad, including associated facilities, roads, pipelines, and utilities.
- Extensive interim reclamation of roadway disturbance and reclamation of well pads to well head/production facilities to minimize long-term surface disturbance.
- Final reclamation fully restoring the original landform. Travel routes would be restored to their original character.
- This stipulation would allow for geophysical operations.
- Off-site mitigation could be required to minimize impacts to resources when onsite mitigation alone may not be sufficient to adequately mitigate impacts and achieve BLM resource objectives.

Location Map Utah BLM Field Office Boundaries



Date: 5/9/2014

Potash Leasing Stipulations - Preliminary Alternative B2



This product may not meet BLM standards for accuracy and content. Different data sources and input scales may cause some misalignment of data layers. No warranty is made by the Bureau of Land Management for the use of the data for purposes not intended by the BLM.

Alternative B: Potash Leasing Areas (PLAs)

Potash leases would only be issued within designated Potash Leasing Areas (PLAs). No additional potash leases or prospecting permits, outside the designated PLAs, would be issued.

Designated PLAs include blocks of public land in areas where potash leases or potash permits have been issued. Within these areas, potash resources have been identified and the feasibility of potash production is being pursued.

No new oil and gas leases would be issued within PLAs until potash leases and permits are relinquished, cancelled, or expire. If the potash prospecting permits issued within the PLAs do not qualify for a preference right lease, then the area would become available for oil and gas leasing and no new potash leases or prospecting permits would be issued.

Alternative B: Potash Processing Facility Areas (PPFAs)

Potash processing facilities can require a substantial commitment of public lands. Therefore, these facilities would be located in areas that have a minimal potential for resource conflicts. PPFAs would be designated based on the following criteria:

- Located outside an SRMA with the exception of the Dee Pass Motorized Focus area within the Labyrinth Rims/Gemini Bridges SRMA and the Canyon Rims SRMA outside of VRI II and VRM II areas along Highway 191.
- Located only in Visual Resource Management (VRM) III or IV areas.
- Located outside of desert bighorn lambing, rutting, and migration habitat.
- Located outside of deer or elk crucial habitat.
- Located in lands that have low levels of ecological intactness.
- Located in areas within reasonable proximity to PLAs.

Apply a CSU stipulation to all potash leases that requires processing facilities to be located within a PFFA. This stipulation would avoid widespread impacts to recreation, visual resources, crucial deer and elk habitat, and bighorn habitat, and ecologically intact lands that could result from the construction of large potash facilities. PPFAs are located outside of areas managed as NSO, closed, or with a Baseline CSU stipulation. As part of this CSU stipulation, off-site mitigation would be required to off-set the impacts of potash processing facility construction.