



“KTIA CORPORATE INTRODUCTION”

Presented By:
SOUNG-JOON KIM
(Chief Operating Officer)

February 27, 2009



WESTERN U.S.
OIL SANDS
CONFERENCE



“WHO WE ARE” – A brief introduction of KTIA

- **KTIA (Korea Technology Industry America, Inc.) is a wholly-owned subsidiary of KTI (Korea Technology Industry Co., Ltd.).**
- **Incorporated in 1972, KTI is headquartered in Seoul, Korea and is a publicly traded company listed on the KRX (Korea Exchange). KTI is a component of the prestigious KOSPI 200 index and is also included in the Morgan Stanley International Capital (MSIC) Index for small & medium sized companies.**
- **KTIA serves as a holding company for six subsidiaries in the U.S. Through its subsidiaries, KTIA’s primary goal is to acquire and develop oil sands reserves in Utah to produce heavy crude oil (bitumen) and premium grade asphalt products.**
- **In early 2008, KTIA became an active energy development company when it completed its acquisition of the oil sands property of Wembco Inc., a privately held company which owned fee simple title to a rich and promising “proven” oil sands reserve in Asphalt Ridge.**
- **KTIA and ALL its subsidiary companies are “100% UTAH-based!”**

KTi – *Constantly devoted to technology, talent and the “Spirit of Challenge”*

Core Business Areas



- Developed core technology in protein bio-chip production (Patented)
- On its way to becoming a global provider of protein bio-chips and analytical devices



- Operates LCD manufacturing and retail business for the Korean B2B electronics market

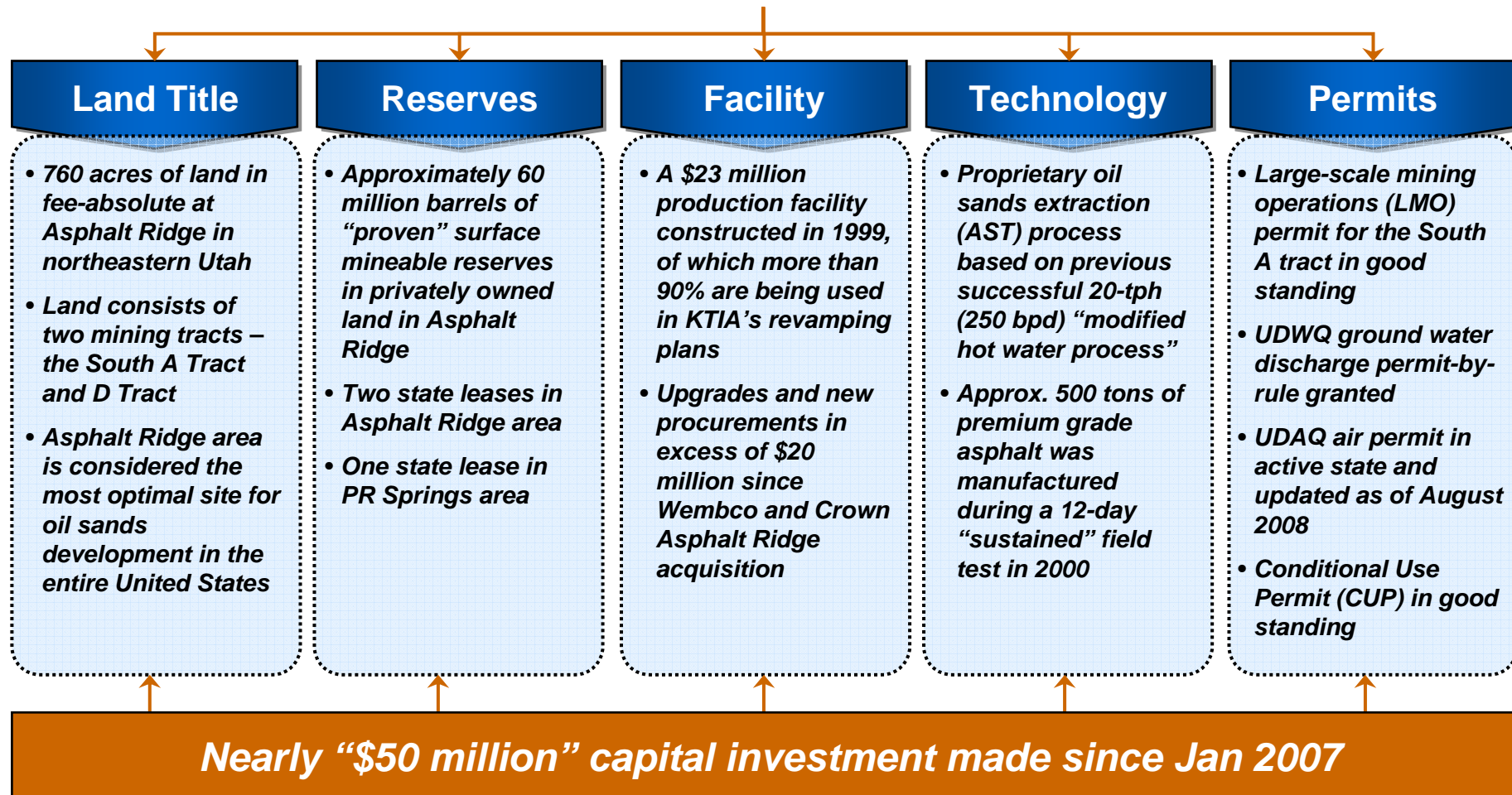


- Established U.S. subsidiary for oil sands project development in Utah
- Established subsidiary in Philippines for bio-diesel plantation development (Joint-ventured with the Philippine National Oil Corporation – Alternative Fuels Corp.)
- Developed rubber-chip processing plant for waste tires in Malaysia
- Operates LPG retail business in the Korean distribution market

KTIA – A quick glance of assets held through our subsidiaries



Assets for Oil Sands Development





“Operations Up to the Present and Beyond...”



Mine Preparation

- ***Experimented various mining techniques to reach optimal productivity levels at minimal cost***
- ***Excavated and stockpiled more than 40,000 tons of highly saturated oil sands ore***
- ***Newly constructed tailings containment facility lined with oil sands ore***
- ***Full re-construction of haul roads, drainage facility and overall mine layout for minimal double handling of materials***



Plant Development & Construction



Marketing Initiatives



Mine Site Overview





Excavation & Hauling



KTI 한국기술산업



Ore Stockpile



Mine Pit Reconstruction



Haul Road Construction



Drainage & Bitumen Pond Repair



Haul Road Reinforcement



Mine Reconstruction

Tailings Containment Facility Construction





“Operations Up to the Present and Beyond...”



Mine Preparation



Plant Development & Construction

- ***Over 90% of existing Crown Asphalt Ridge facility newly refurbished in 2008 and made mechanically operational for use in KTIA’s revamp plan***
- ***Commissioning of refinery section complete***
- ***Current targets for the first production facility are for an average production of 1,200 bpd of bitumen; Efforts to de-bottleneck will allow for gradual increase in average bitumen production up to 1,800 bpd***
- ***Under current plans, KTIA is targeting to commence operations of this facility by year-end 2009, with post-2010 plans to develop and operate a 10,000+ bpd (large-scale) production plant in Asphalt Ridge***

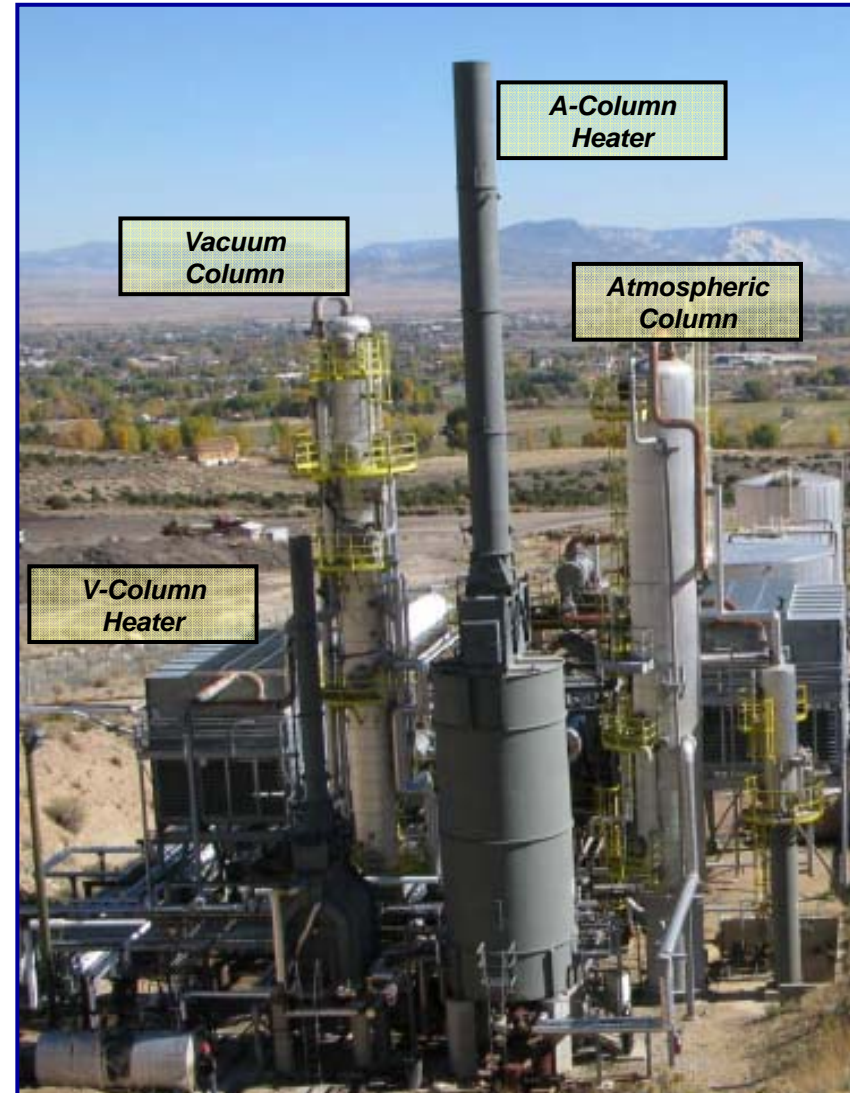
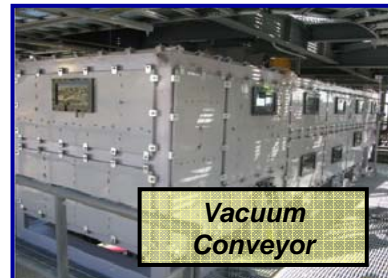


Marketing Initiatives

Production (Plant) Site Overview



Extraction & Refining Facility



Pipe Line Construction



[Pipe Line Connection of V-401 Vapor Line]

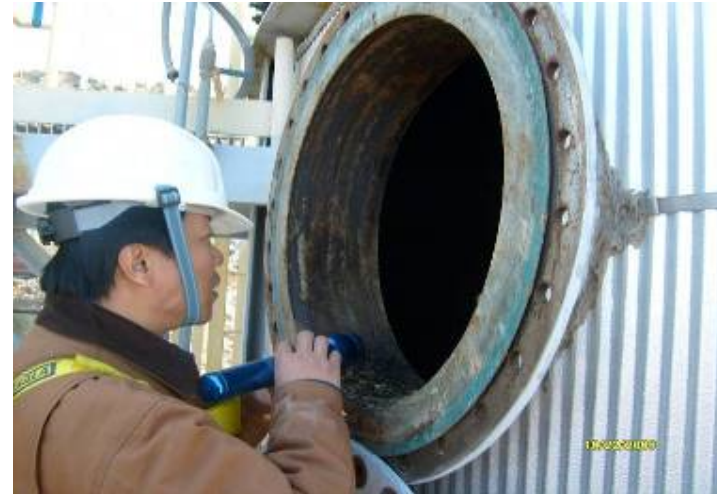


[Pipe Line Connection on the Pipe Rack of Extraction Module]

Facility Inspection & System Check



[T-201B/C Internal Inspection]



[Fire Fighting System Check]



[Flare System Instrument Check]

Pipeline Steam Flushing and SRU Commissioning



[Pipe Line Steam Flushing from SRU to Flare]

Winterization and Insulation Installation



[Insulation of New Pipe Lines to Storage and Bullet Tanks]



[Electric Heat Tracing Installation]



“Operations Up to the Present and Beyond...”



Mine Preparation



Plant Development & Construction



Marketing Initiatives

- ***Initial short-term focus primarily on Utah’s asphalt market***
- ***Joint venture with Shell Sulfur Solutions (SHELL) to develop a next-generation asphalt product by 2009 and enter into potential off-take agreement by 2010***
- ***Co-developed product will utilize SHELL’s “THIOPAVE” technology for sulfur enhanced road construction; SHELL and KTIA to jointly execute the THIOPAVE test-program within the year in conjunction with UDOT***
- ***In the meantime, KTIA will continue to provide support and assistance to UDOT and state counties in on-going efforts to utilize mine-run ore as road paving material***

Shell's sulfur-based asphalt modifier – “THIOPAVE” (formerly known as “SEAM”)

Shell
Thiopave

Technologies for Sulphur Enhanced Road Construction



- **Solid Pellets (up to 97% sulfur)**
 - Includes plasticizers, compaction agent and fume suppressants
- **Can be stored on the ground or in silos**
 - No concern with moisture during storage
- **Warm-mix (below 285F) ideal**
- **Provides partial replacement of asphalt binder (up to 25% based on 40/60 mass ratio)**
- **Increased stiffness at high service temperatures, reduced temperature susceptibility**
 - Improved resistance to rutting/permanent deformation

- ☐ *The new SHELL-KTIA oil sands product (via THIOPAVE technology) can provide KTIA with the opportunity to revolutionize the asphalt paving market as we know it today*
- ☐ *KTIA is firmly committed to the successful development of this next-generation product; Tests are already underway and are expected to be completed during 3Q of 2009*
- ☐ *KTIA hopes to deliver the final product by year-end for UDOT approval and begin production of the new sulfur-enhanced oil sands product for UDOT's road paving requirements as early as 2010*

KTIA's Ultimate Mission and Goals – “TO CONTRIBUTE TO THE STATE, THE NATION, AND THE ENVIRONMENT”

KTIA's Value Proposition



Perfecting technology that is viable for extracting bitumen from oil sands on a scale suitable to the oil sands reserves in the United States

1

Help contribute to Utah's needs for stable asphalt supply by becoming a fully reliable and dependable “in-state” producer of premium grade asphalt

2

Help the nation develop its vastly untapped domestic resources by becoming the first to commercialize oil sands operations in the U.S.

3

Help create a safer and cleaner environment by producing products that leave greatly reduces harmful emissions and carbon footprints



Thank You!

