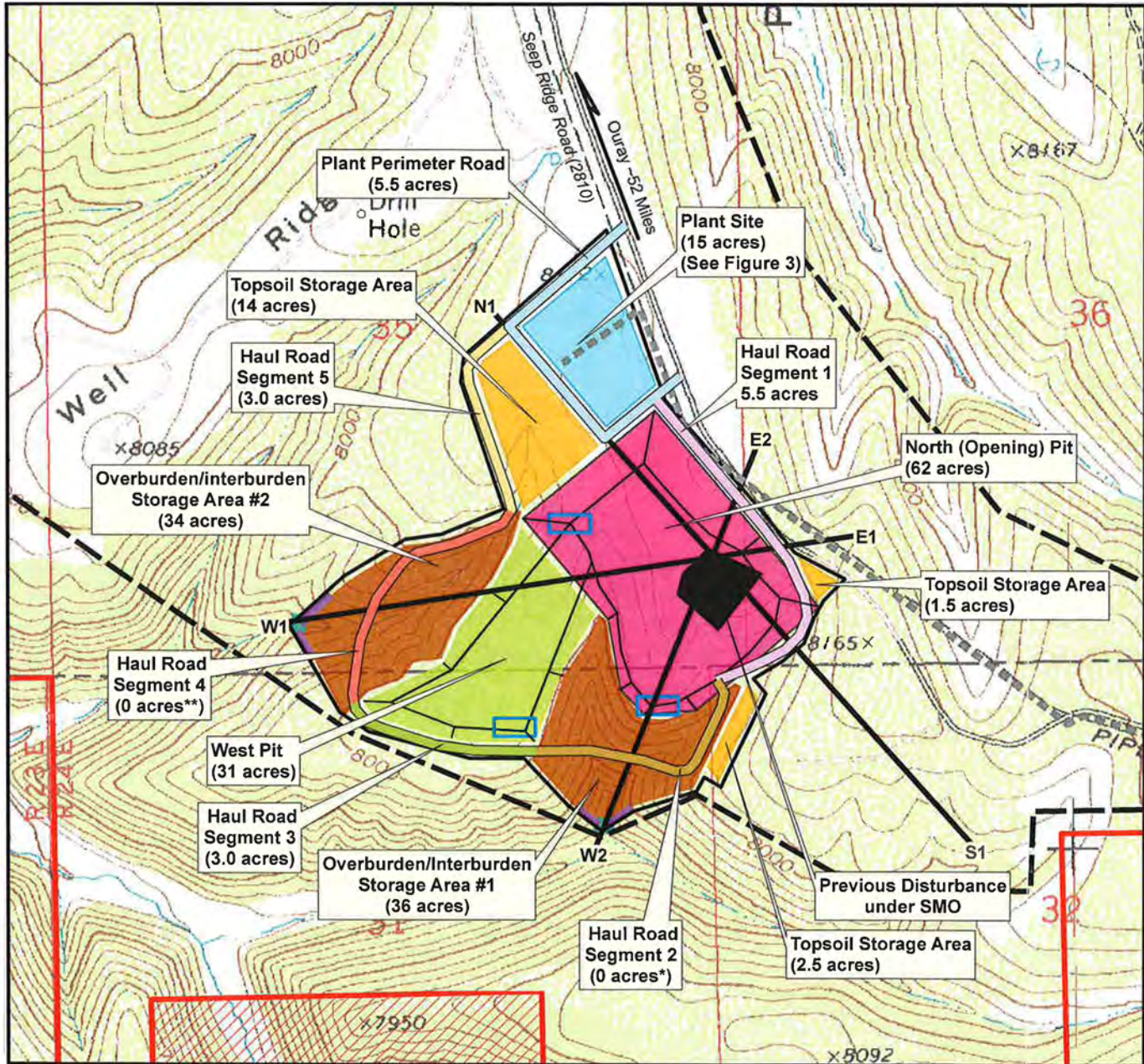


During Mining



Legend

- | | | |
|---|--------------------------------------|------------------------------|
| Earth Energy Lease Boundary | Previous Disturbance under SMO | Collection Sump (inflow) |
| Property Excluded from Lease | Plant Site | Rip-Rap Energy Dissipater |
| Affected Area | Topsoil Storage Areas | Rip-Rap Armoured Channel Bed |
| Study Area Boundary | West Pit | Plant Perimeter Road |
| Cross Section Line | Overburden/Interburden Storage Areas | Haul Road Segment 1 |
| Water Pipeline (Water line not part of this NOI - permitted under Exploration Notice #E0190053) | North (Opening) Pit | Haul Road Segment 2* |
| Haul Road Segment 3 | | |
| Haul Road Segment 4** | | |
| Haul Road Segment 5 | | |

* Acreage Intergal with Overburden/Interburden Storage Area #1
 ** Acreage Integral with Overburden/Interburden Storage Area #2

EARTH ENERGY RESOURCES, INC.
 PR SPRING TAR SANDS DEVELOPMENT PROJECT

FIGURE 2
MINE SURFACE FACILITIES
AND LAND STATUS MAP

	DESIGN BY	LM	DRAWN BY	CP	SCALE	As Shown	DATE	9/11/07
							REVISION	3/31/08
							REVISION	5/08/08
							REVISION	10/30/08