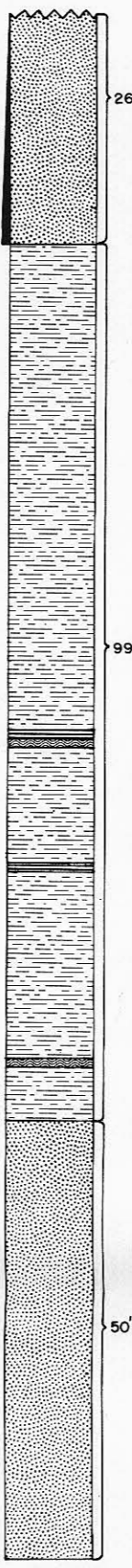


SECTION 7. One mile west of Stevenson's corral, north of P. R. Spring
E1. top of section - 7990 feet.
SE SW 527-1155-R23E

SECTION 10. First fence east of Three Pines on south side of ridge
E1. top of section - 7880 feet
NW SE 516-1165-R23E

10-4 U

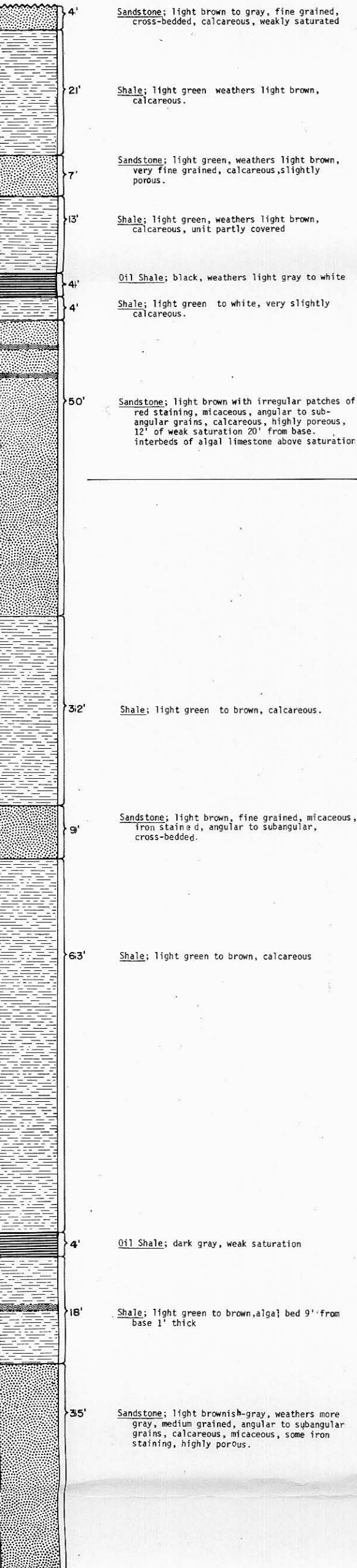


26' Sandstone; light grayish-brown, cross-bedded, fine grained, subangular, micaceous, iron staining, calcareous, porous; stained to weakly saturated.

99' Shale; green, thin to medium bedded, calcareous; 1 foot of algal limestone 6 feet from base; 4 foot oil shale 29 feet from base; 1 foot algal bed 42 feet from base; 1 foot oil shale 43 feet from base.

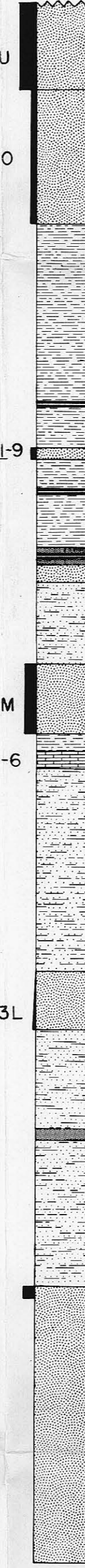
50' Sandstone; light brown, cross-bedded and massive, fine grained, subangular, iron staining, micaceous, calcareous, porous.

SECTION #1. Seep ridge one mile southwest of Three Pines
E1. 7780' - top of bituminous sand.



SECTION 11. Cat blaze - west side of Whetrock Canyon
E1. top of section - 7780 feet
SW SW 531-1155-R23E

11-11 U



15' Sandstone; black, cross-bedded, medium grained, subangular, sugary texture, non-calcareous, non-porous, richly saturated.

23' Sandstone; dark brown, very fine grained, flaggy, calcareous, slightly porous, stained to very weakly saturated.

39' Shale; green, thin bedded, calcareous, 1 foot oil shale 7 feet from base; weathers light brown toward the top of the unit.

2' Sandstone; dark gray, fine to medium grained, subangular, oolitic, light, weakly saturated.

15' Shale; green, thin bedded, calcareous, unit partly covered; 1 foot oil shale 10 feet from base.

6' Sandstone; dark brown, very fine grained, calcareous, slightly porous, oolitic, stained; 3 foot algal limestone 3 feet from base with 1 foot oil shale in middle of algal bed.

14' Siltstone; green, medium bedded, calcareous, unit partly covered.

12' Sandstone; dark gray to black, cross-bedded and flaggy, fine to medium grained, subangular, non-porous, non-calcareous, moderately saturated.

3' Shale; green, thin bedded, slightly calcareous.

3' Oolitic limestone; dark brown, very dense, irregular saturation.

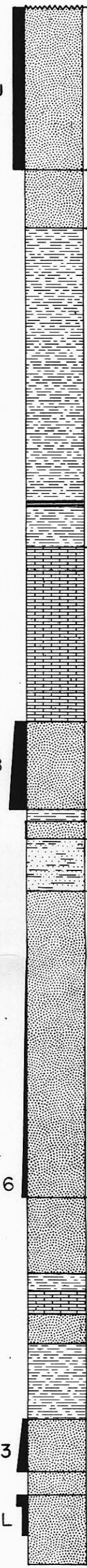
35' Sandy siltstone; green to light green, medium bedded, calcareous, 1 foot sand stringer 15 feet from base.

10' Sandstone; light brownish-gray, weathers lighter, cross-bedded, fine grained, subangular, micaceous, iron staining, calcareous, porous barren to weakly stained.

44' Siltstone; green, calcareous, medium bedded; 2 foot algal conglomerate 25 feet from base; unit partly covered.

48' Sandstone; light brown, cross-bedded, fine to medium grained, subangular, iron staining, micaceous, calcareous, porous, upper 2 feet are weakly saturated.

7-10 U



28' Sandstone; dark grayish-brown, weathers light gray with red patches, limonite staining, fine grained, subangular, non-calcareous, very slightly porous, moderately saturated.

10' Sandstone; light gray, weathers light orange-brown, fine grained, subangular, iron staining, micaceous, slightly porous.

55' Shale; green, thin bedded, slightly calcareous, 1 foot oil shale, 7 feet from base.

30' Oolitic limestone; white, weathers light brownish-white, algal structures.

15' Sandstone; black to dark gray, fine to medium grained, subangular grains, calcareous, slightly porous, moderate to rich saturation, unit partly covered.

2' Shale; green, weathers brown, slightly calcareous, medium bedded.

3' Oolitic sandstone; light gray, fine to medium grained, angular to subangular, very calcareous, poor porosity, dense, algal structures, stained saturation.

9' Siltstone; green, medium bedded, calcareous, porous, unit partly covered.

53' Sandstone; medium gray, cross-bedded, medium to coarse grained, angular to subangular, stringers of iron staining, very porous, weakly saturated.

13' Sandstone; green, weathers to yellow-orange, flaggy, fine grained, subangular grains, iron staining, highly porous.

3' Shale; green, thin to medium bedded, calcareous, unit partly covered.

4' Oolitic sandy limestone; white to chalky-gray, very dense; top foot contains algal structures.

15' Sandstone; light brown, massive, fine grained, angular to subangular, calcareous.

13' Covered; most likely a green shale as found above, thick bedded, iron concretions.

25' Oolitic sandstone; light yellowish-brown, weathers white, calcareous; weak saturation 5-10 feet from base; moderate to rich 10-12 feet from base, this unit is cross-bedded; 4 feet of weak to moderately saturated, oolitic, calcareous, conglomerate - 12 feet from base; cross-bedded, weak to moderately saturated sandstone - 9 feet thick, 15 feet from the base.

7500'

ROAN CLIFF-PR SPRING AREA
Uintah & Grand Counties, Utah
Bituminous Sandstone Study

