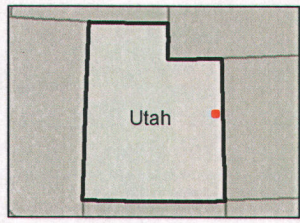


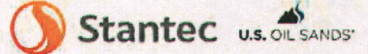
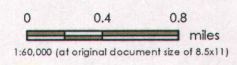
DRAFT



- Legend**
- PR Spring Lease Block
 - Affected Area
- Ownership**
- BLM
 - Private
 - State

- Notes**
1. Coordinate System: NAD 1983 UTM Zone 12N
 2. Service Layer Credits: Copyright © 2013 National Geographic Society, i-cubed

Disclaimer: Stantec assumes no responsibility for data supplied in electronic format. The recipient accepts full responsibility for verifying the accuracy and completeness of the data. The recipient releases Stantec, its officers, employees, consultants and agents, from any and all claims arising in any way from the content or provision of the data.



Project Location: 203714048
 Portions of T15S R24E, T15.5S R24E, and T16S, R24E
 Prepared by CLP on 2014-10-07
 Technical Review by KK on 2014-10-10
 Uintah and Grand Co., UT Independent Review by LM on 2014-10-30

Client/Project:
 U.S. Oil Sands, (Utah) Inc.
 PR Spring Mine

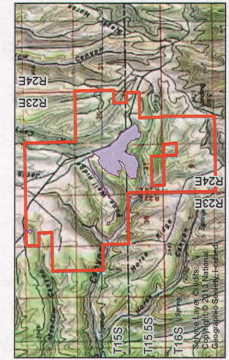
Figure No. **1** **DRAFT**

Title
Project Location Map

- Legend**
- Previously Approved Permit Boundary
 - Disturbance Limit Boundary
 - County Line
 - Drill Hole
 - Pit 1
 - Pit 2
 - Pit 3
 - Plant
 - Stormwater Management Area
 - OS Storage Area
 - Topsoil Stockpile
 - Haul Road Disturbance
 - Well, Well Access Road, and Man Camp

0 750 1,500 Feet
 1:18,000 (At original document size of 11x17)

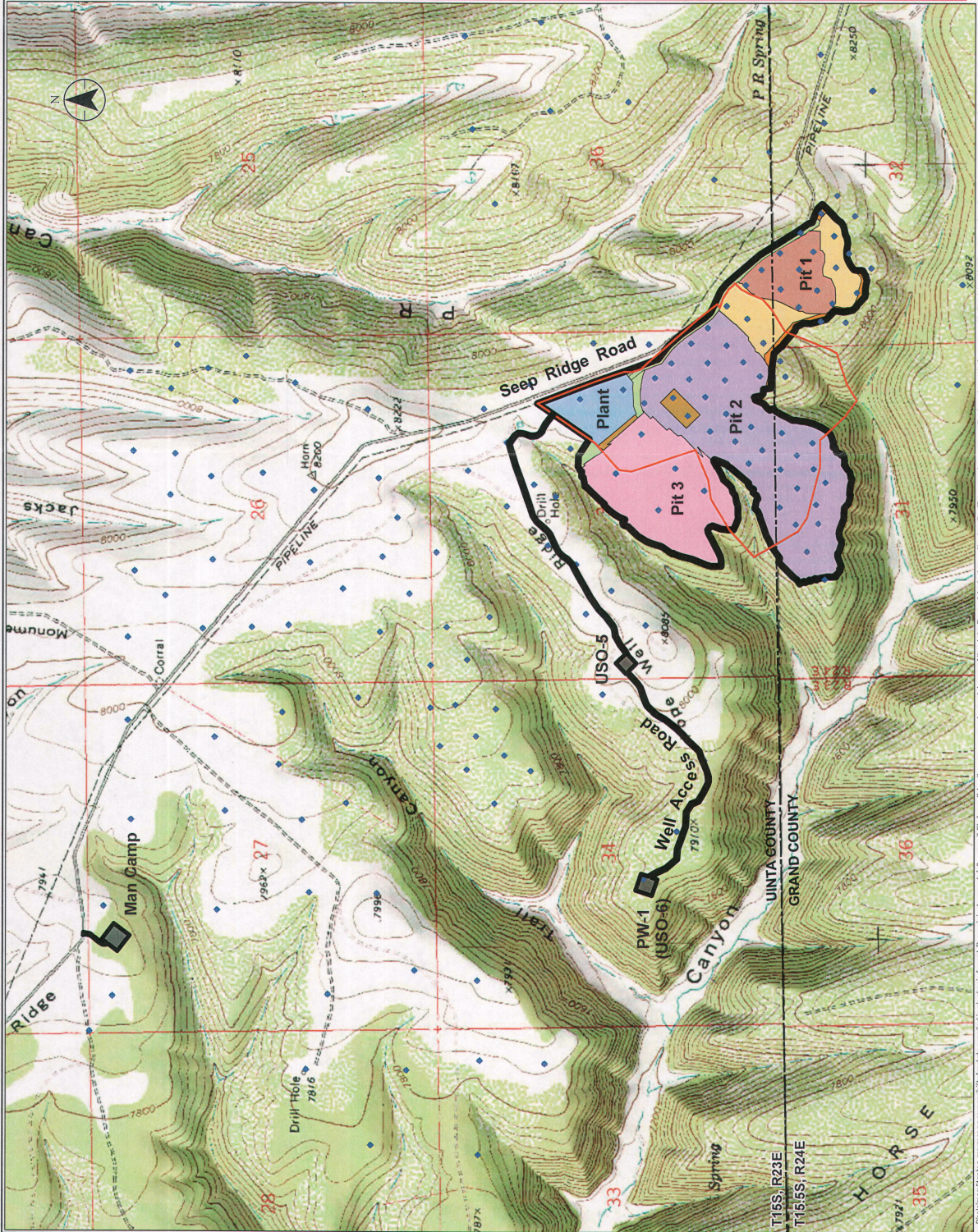
Notes
 1. Coordinate System: NAD 1927 UTM Zone 12N
 2. Modified from Norwest Corporation, 06/04/2014, \TUSOilSands\384-6



Project Location: 203714038
 Prepared by CLP on 2014-10-07
 Checked by: [Name]
 Independent Review by JM on 2014-11-12

Client/Project:
 U.S. Oil Sands, (Utah) Inc.
 PR Spring Mine

Figure No. [Blank]
 Title: **DRAFT**
Pre-mining Map

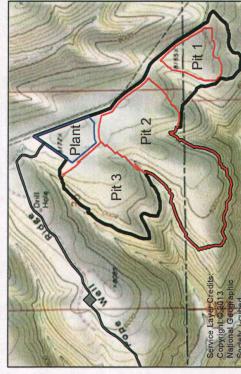


Document: Stantec assumes no responsibility for data supplied in electronic format. The recipient warrants its responsibility for verification the accuracy and completeness of the data. The recipient releases Stantec, its officers, employees, consultants and agents, from any and all claims arising in any way from the content or provision of the data.

- Legend**
- Plant Boundary
 - Berm
 - Culvert
 - Ditch



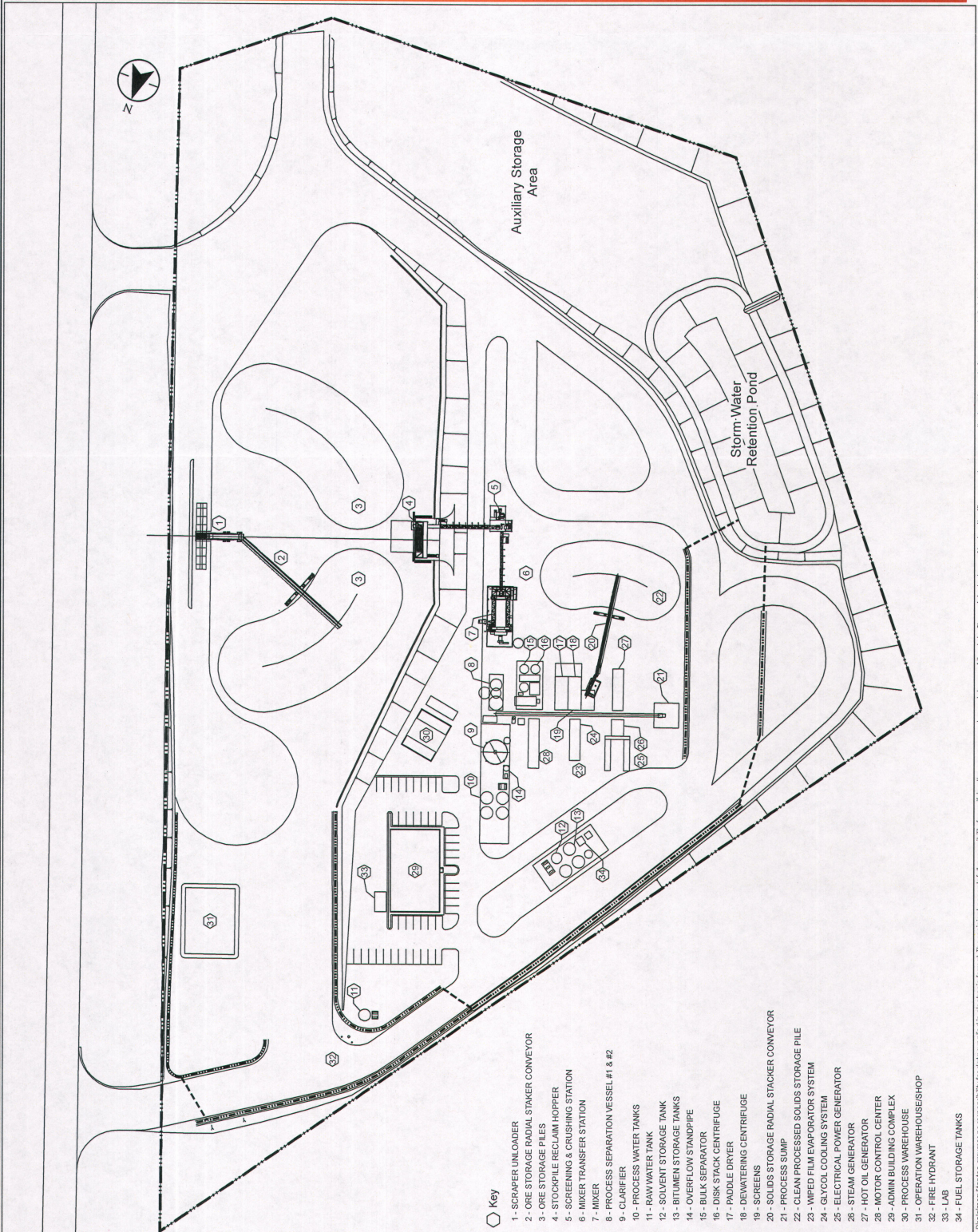
- Notes**
1. Coordinate System: NAD 1927 StatePlane Utah Central FIPS 4302.
 2. Modified from KBR, Figure 3 Overall Site Plan, 07/30/2014, P714-00-394(C).



Project Location: 203714028
 Prepared by: CTE on 2014-10-09
 Checked by: JMS on 2014-10-09
 Drawn by: TKS, RJE
 Utah and Grand Co., UT
 Independent Review by: LM on 2014-10-30

Client/Project:
 U.S. Oil Sands, (Utah) Inc.
 PR Spring Mine

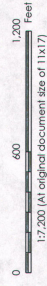
Figure No. **3**
 Title **Overall Site Plan**
DRAFT



- Key**
- 1 - SCRAPPER UNLOADER
 - 2 - ORE STORAGE RADIAL STACKER CONVEYOR
 - 3 - ORE STORAGE PILES
 - 4 - STOCKPILE RECLAIM HOPPER
 - 5 - SCREENING & CRUSHING STATION
 - 6 - MIXER TRANSFER STATION
 - 7 - MIXER
 - 8 - PROCESS SEPARATION VESSEL #1 & #2
 - 9 - CLARIFIER
 - 10 - PROCESS WATER TANKS
 - 11 - RAW WATER TANK
 - 12 - SOLVENT STORAGE TANK
 - 13 - BITUMEN STORAGE TANKS
 - 14 - OVERFLOW STANDPIPE
 - 15 - BULK SEPARATOR
 - 16 - DISK STACK CENTRIFUGE
 - 17 - PADDLE DRYER
 - 18 - DEWATERING CENTRIFUGE
 - 19 - SCREENS
 - 20 - SOLIDS STORAGE RADIAL STACKER CONVEYOR
 - 21 - PROCESS SUMP
 - 22 - CLEAN PROCESSED SOLIDS STORAGE PILE
 - 23 - WIPED FILM EVAPORATOR SYSTEM
 - 24 - GLYCOL COOLING SYSTEM
 - 25 - ELECTRICAL POWER GENERATOR
 - 26 - STEAM GENERATOR
 - 27 - HOT OIL GENERATOR
 - 28 - MOTOR CONTROL CENTER
 - 29 - ADMIN BUILDING COMPLEX
 - 30 - PROCESS WAREHOUSE
 - 31 - OPERATION WAREHOUSE/SHOP
 - 32 - FIRE HYDRANT
 - 33 - LAB
 - 34 - FUEL STORAGE TANKS

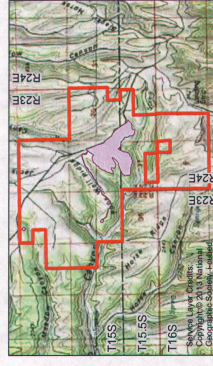
Disclaimer: Stantec assumes no responsibility for data supplied in electronic format. The recipient accepts full responsibility for verifying the accuracy and completeness of the data. The recipient releases Stantec, its officers, employees, consultants and agents, from any and all claims arising in any way from the content or execution of the data.

- Legend**
- Disturbance Limit Boundary
 - - - County Line
 - · - · Gas Lines
 - == Roads
 - == Topo Contours (2 meters)
 - Pit Boundary
 - Plant
 - Topsoil Stockpile
 - Well and Well Access Road
 - Active Mining Pit
 - Haul Road
 - Backfill Contours (2 meters)



Notes

1. Coordinate System: NAD 1927 UTM Zone 12N
2. Modified from Norwest Corporation, Quarter 4 Year 1, 08/07/2014, T155.R24E



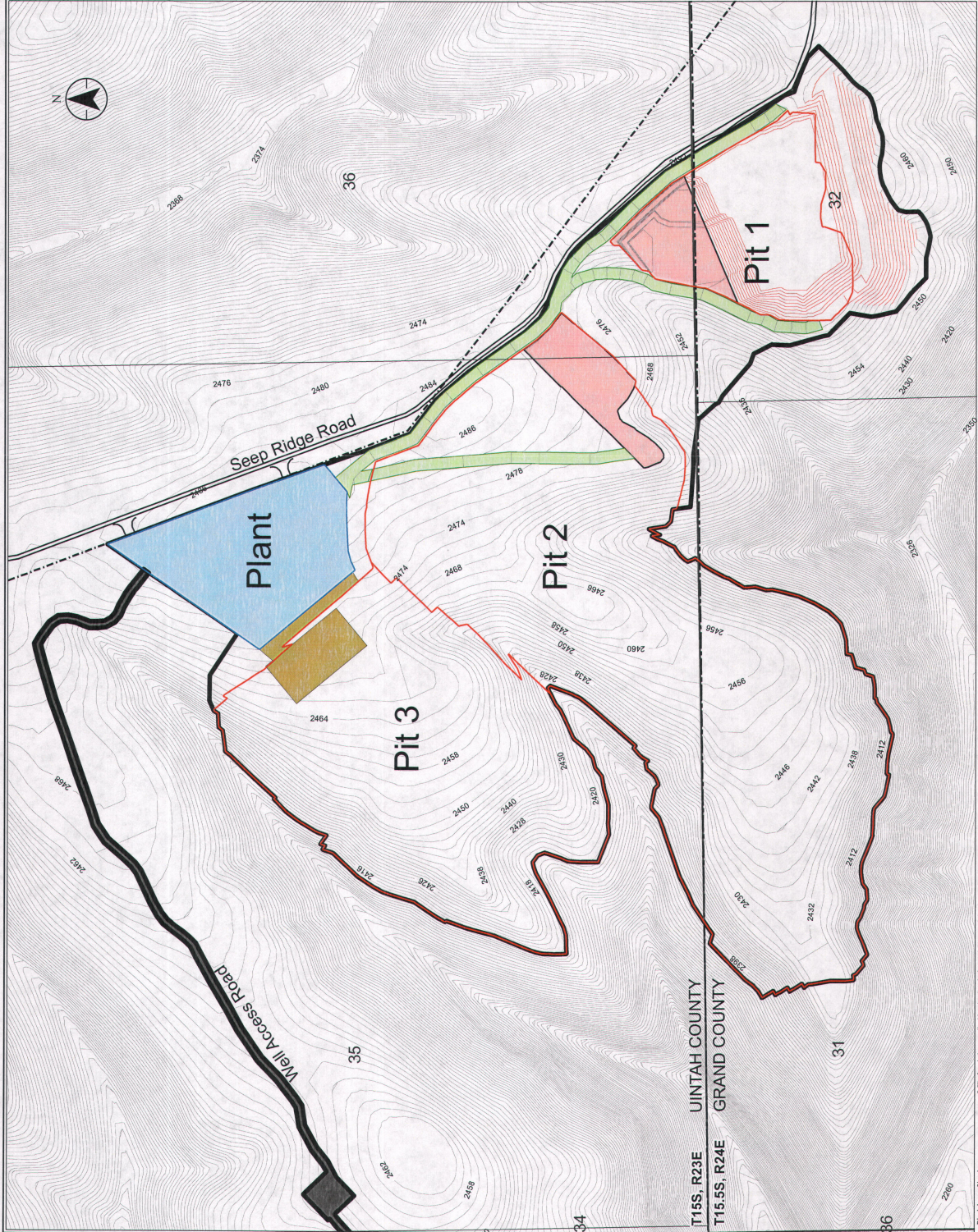
Project Location
 Portions of T15S R24E,
 T16S R24E, and T16S R25E
 U.S. Geological Survey, National
 Geographic Inventory - Digital
 203714018
 Prepared by CLP on 2014-10-07
 Technical Review by M on 2014-10-07
 Independent Review by M on 2014-10-30

Client/Project
 U.S. Oil Sands (Utah) Inc.
 PR Spring Mine

Figure No.
4a

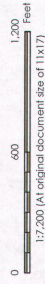
Title
End of Year 1

DRAFT

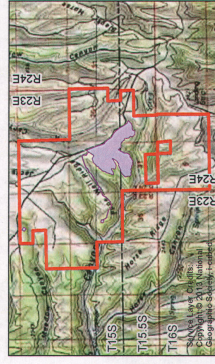


Disclaimer: Stantec assumes no responsibility for data modified in electronic format. The recipient accepts full responsibility for verifying the accuracy and completeness of the data. The recipient releases Stantec, its officers, employees, consultants, and agents, from any and all claims arising in any way from the content or provision of the data.

- Legend**
- Disturbance Limit Boundary
 - County Line
 - Gas Lines
 - Roads
 - Topo Contours (2 meters)
 - Pit Boundary
 - Plant
 - Topsoil Stockpile
 - Well and Well Access Road
 - Active Mining Pit
 - Haul Road
 - Backfill Contours (2 meters)

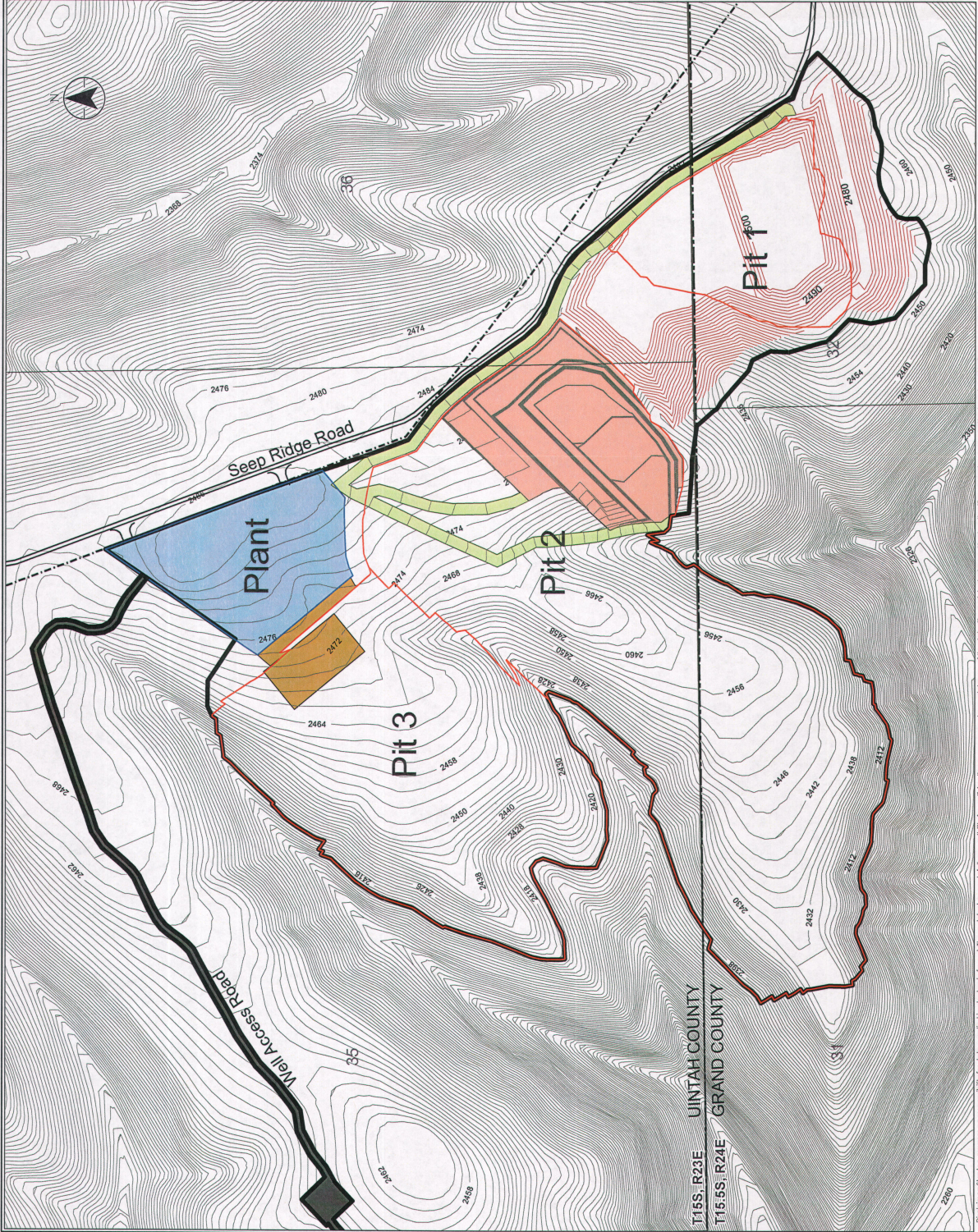


Notes
 1. Coordinate System: NAD 1983 UTM Zone 12N
 2. Projection: UTM
 3. Datum: North American 1983
 4. Units: Meter
 5. Date: 08/04/2014, T:\USOS\Sand, 384-4



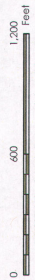
Project Location: 203714078
 Prepared by CTF on 2014-09-07
 Checked by CTF on 2014-09-07
 Approved by CTF on 2014-09-07
 Client: U.S. Oil Sands, (Utah) Inc.
 Client Project: PR Spring Mine

Figure No. **4b**
 Title **End of Year 2**
DRAFT



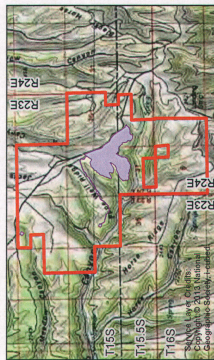
Disclaimers: Client assumes no responsibility for data supplied in electronic format. The recipient accepts full responsibility for verifying the accuracy and completeness of the data. This recipient releases Stantec, its officers, employees, consultants and agents, from any and all claims arising from the content or provision of the data.

- Legend**
- Disturbance Limit Boundary
 - - - County Line
 - · - · Gas Lines
 - == Roads
 - == Topo Contours (2 meters)
 - Pit Boundary
 - Plant
 - Topsoil Stockpile
 - Well and Well Access Road
 - Active Mining Pit
 - Haul Road
 - Backfill Contours (2 meters)



Notes

1. Coordinate System: NAD 1927 UTM Zone 12N
2. Elevation: Mean Sea Level, End of Year 3.
3. UTM Zone 12N, UTM Easting, 18944

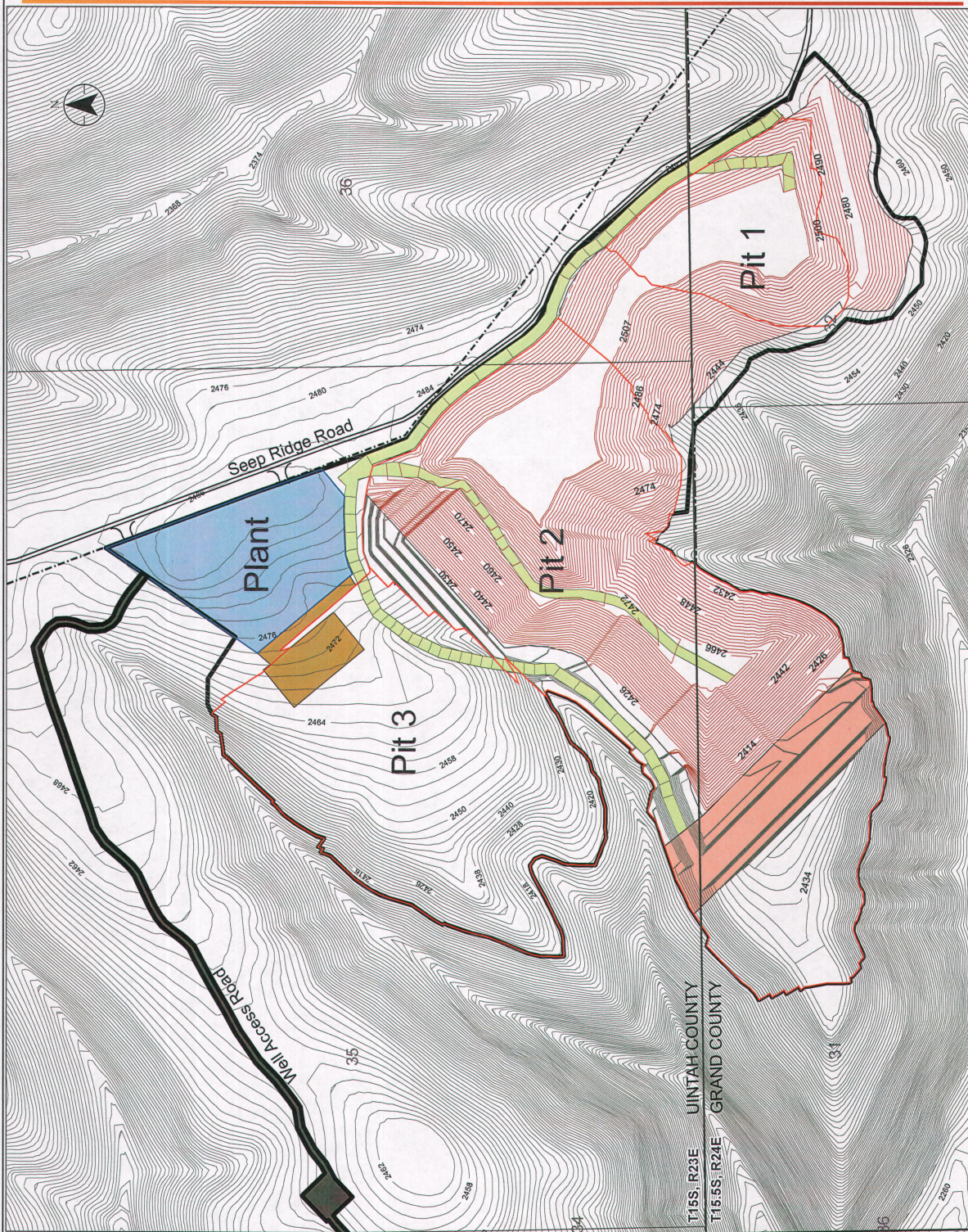


Project Location: 2037140.65
 Prepared by CLP on 2014-10-27
 Title: PR Spring Mine
 Independent Review by IAC on 2014-10-30

Client/Project:
 U.S. Oil Sands, (Utah) Inc.
 PR Spring Mine

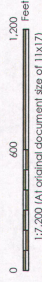
Figure No. **4C**
 Title **DRAFT**

End of Year 3



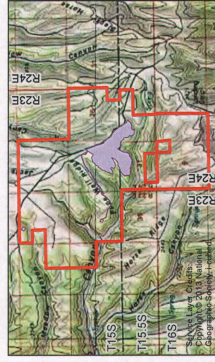
Disclaimer: Stantec assumes no responsibility for data supplied in electronic format. The recipient assumes full responsibility for verifying the accuracy and completeness of the data. The recipient releases Stantec, its officers, employees, consultants, and agents, from any and all claims arising in any way from the content or provision of the data.

- Legend**
- Disturbance Limit Boundary
 - - - County Line
 - · - · Gas Lines
 - == Roads
 - == Topo Contours (2 meters)
 - Pit Boundary
 - Plant
 - Topsoil Stockpile
 - Well and Well Access Road
 - Active Mining Pit
 - Haul Road
 - Backfill Contours (2 meters)



Notes

1. Coordinate System: NAD 1927 UTM Zone 12N
2. Date of Information: End of Year 4, 08/04/2014, U:\USOS\Bands\3844

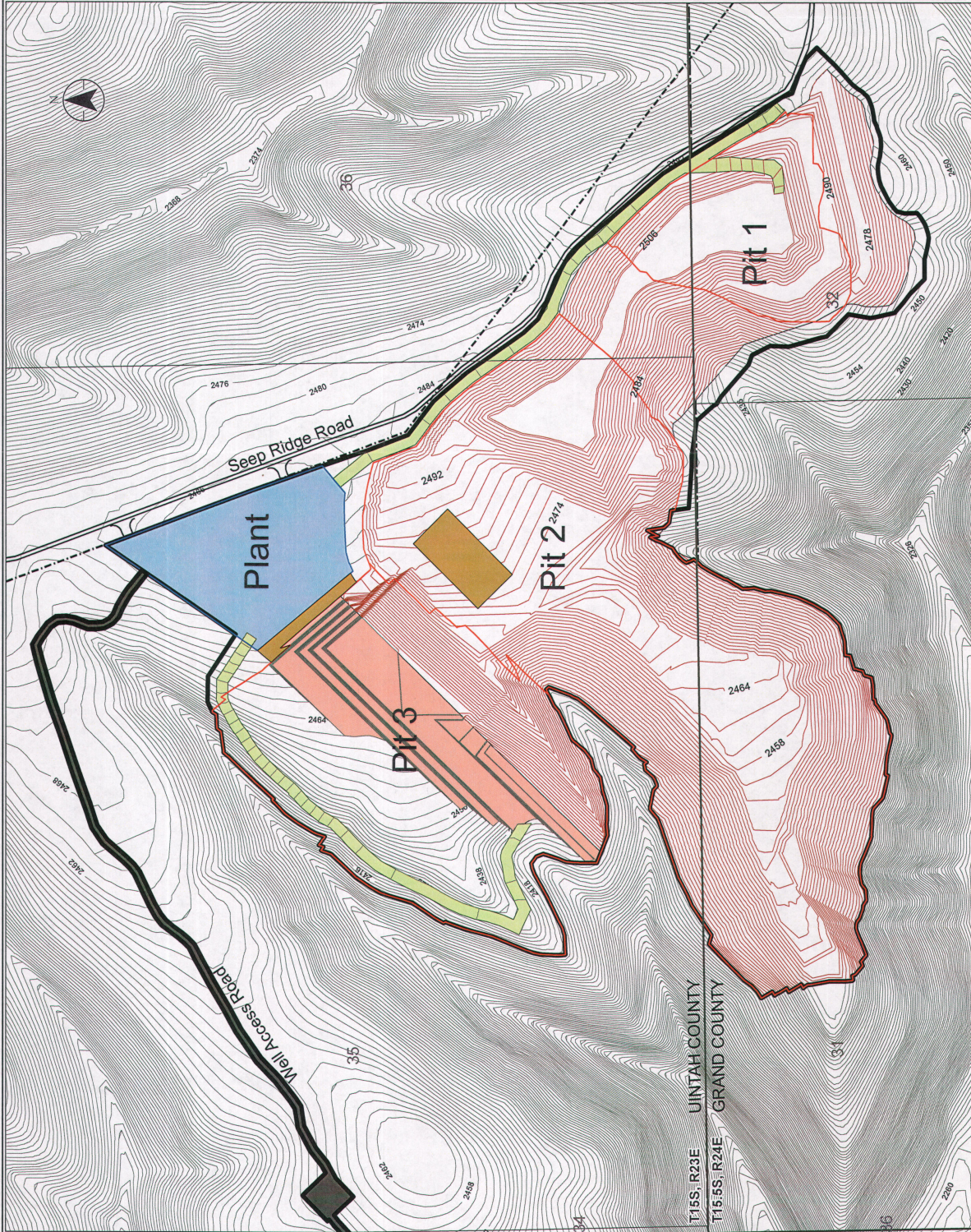


Project Location
 2037140248
 Prepared by CJP on 2014-10-07
 Modified by CJP on 2014-10-07
 Independent Review by LM on 2014-10-30

Client/Project
 U.S. Oil Sands, (Utah) Inc.
 PR Spring Mine

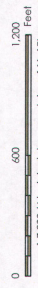
Figure No.
 4d
Title
 End of Year 4

DRAFT

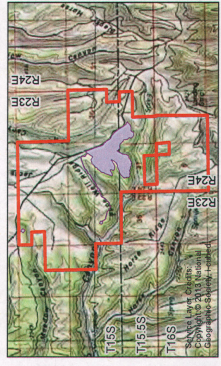


Disclaimer: Stantec assumes no responsibility for data supplied in electronic format. The recipient agrees to verify the accuracy and completeness of the data. The recipient releases Stantec, its officers, employees, consultants, and agents, from any and all claims, actions in any way from the content or provision of the data.

- Legend**
- Disturbance Limit Boundary
 - - - County Line
 - · - · Gas Lines
 - == Roads
 - Topo Contours (2 meters)
 - Pit
 - Plant
 - Topsoil Stockpile
 - Well and Well Access Road
 - ▨ Ore Removal Year 1
 - ▩ Ore Removal Year 2
 - ▧ Ore Removal Year 3
 - ▦ Ore Removal Year 4
 - ▥ Ore Removal Year 5

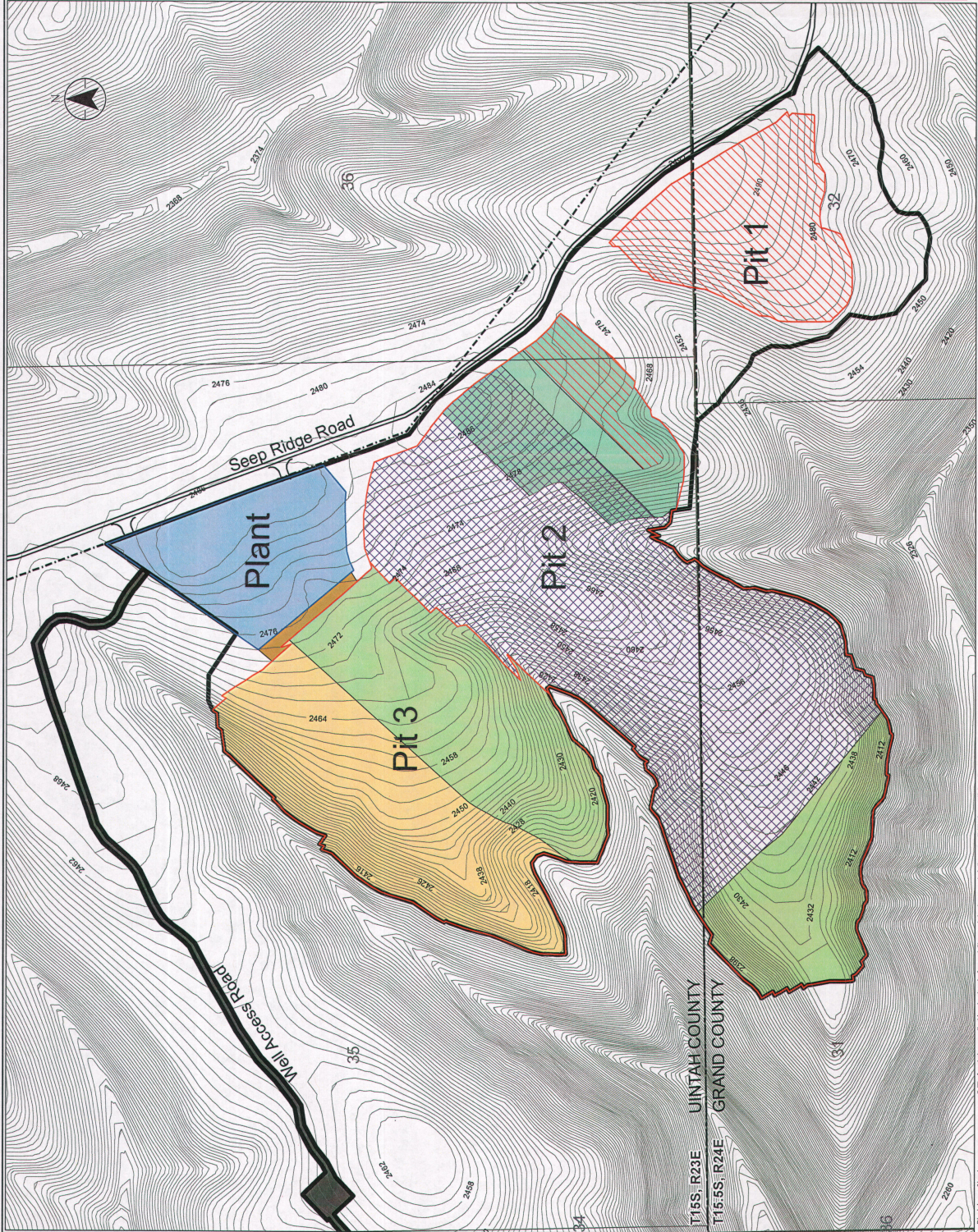


Notes
 1. Coordinate System: NAD 1927 UTM Zone 12N
 2. This map is a planimetric projection. Ore Removal Sequence, 09/04/2014, T15.5S, R24E, 394.4



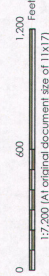
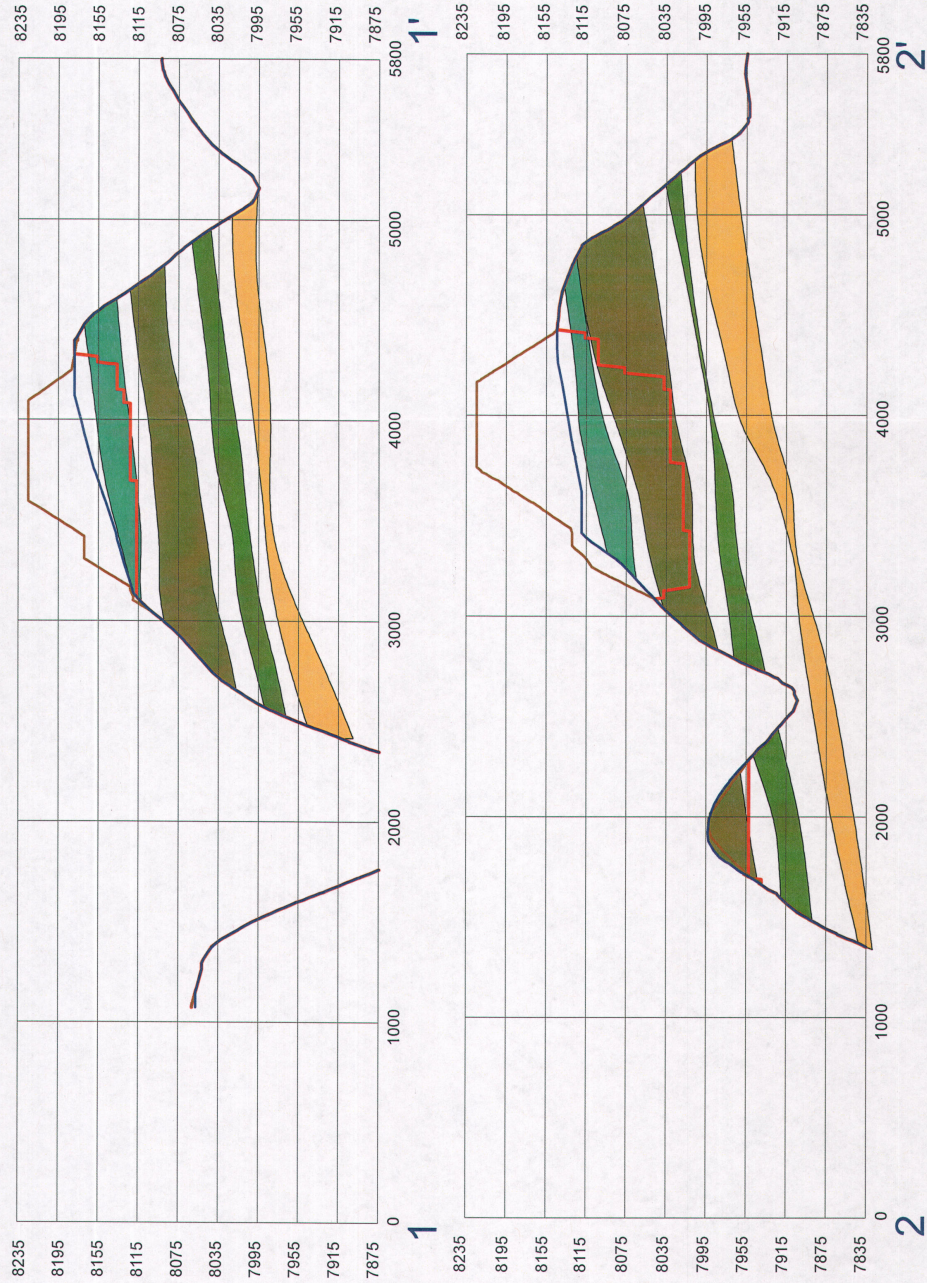
Project Location: 203774035
 Prepared by CLP on 2014-10-07
 Reviewed by CLP on 2014-10-07
 Checked by CLP on 2014-10-07
 Approved by CLP on 2014-10-07
 Client Project: U.S. Oil Sands, (Utah) Inc.
 PR Spring Mine

Figure No. 5
 Title **Ore Removal Sequence**
DRAFT



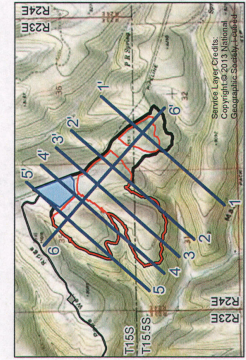
Disclaimers: Stantec assumes no responsibility for data supplied in electronic format. The recipient accepts full responsibility for verification of the accuracy and completeness of the data. The recipient releases Stantec, its affiliates, employees, consultants and agents, from any and all claims, suits, and demands, in any way from the recipient or creation of the data.

- Legend**
- Post Mining Reclaimed Topography
 - Original Topography
 - Ultimate Pit Limit
 - Oil Sand Bed D
 - Oil Sand Bed C
 - Oil Sand Bed B
 - Oil Sand Bed A



Notes

1. Coordinate System: NAD 1927 BLM Zone 12N
2. Modified from Norwest Corporation, End of Year 4, 07/07/2014, \\\USOSand\USO4



Project Location
 Portions of T15S R24E, R25E, R26E
 Township 15S, Range 24E, 25E, 26E
 Utah, U.S.A.

20371405
 Prepared by CLP on 2014-10-07
 Technical Review by J.M. on 2014-10-30
 Independent Review by J.M. on 2014-10-30

Client/Project
 U.S. Oil Sands (Utah) Inc.
 PR Spring Mine

Figure No.
6a
 Title

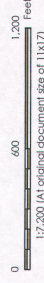
Cross Section 1

DRAFT

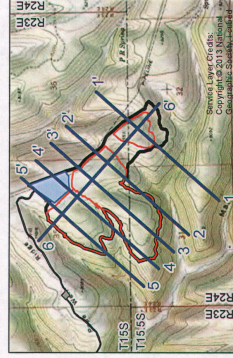
SCALE: 1 Horizontal:5 Vertical

Disclaimer: Stantec assumes no responsibility for data supplied in electronic format. The recipient accepts full responsibility for verifying the accuracy and completeness of the data. The recipient releases Stantec, its officers, employees, consultants and agents, from any and all claims, stipulated or otherwise, from any and all claims stipulated or otherwise, from the content or provision of the data.

- Legend**
- Post Mining Reclaimed Topography
 - Original Topography
 - Ultimate Pit Limit
 - Oil Sand Bed D
 - Oil Sand Bed C
 - Oil Sand Bed B
 - Oil Sand Bed A



- Notes**
1. Coordinate System: NAD 1983 BLM Zone 12N
 2. Date of Data Collection: End of Year 4, 07/18/2014, TUSO68685354.6

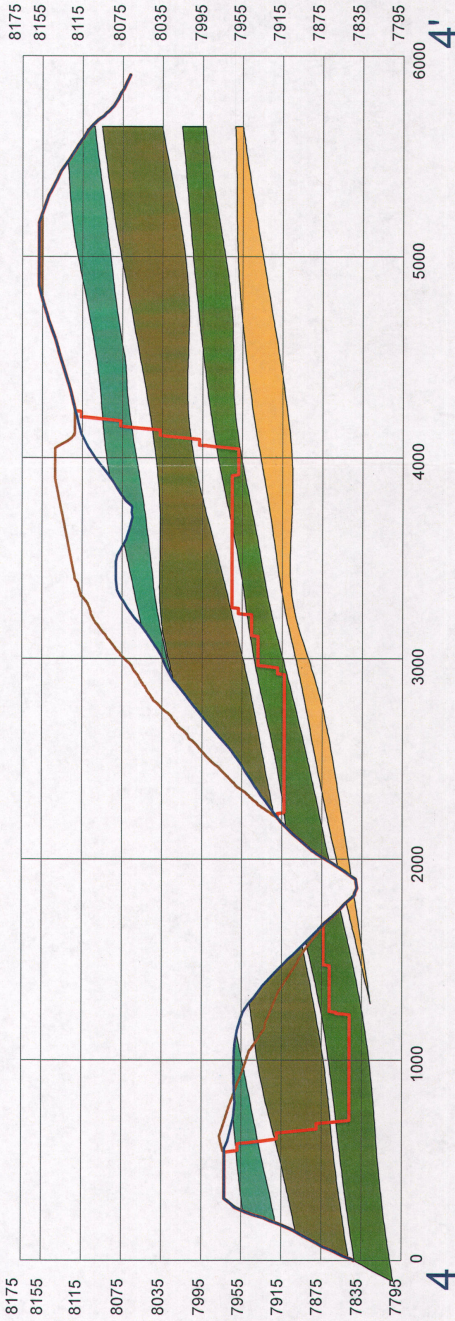
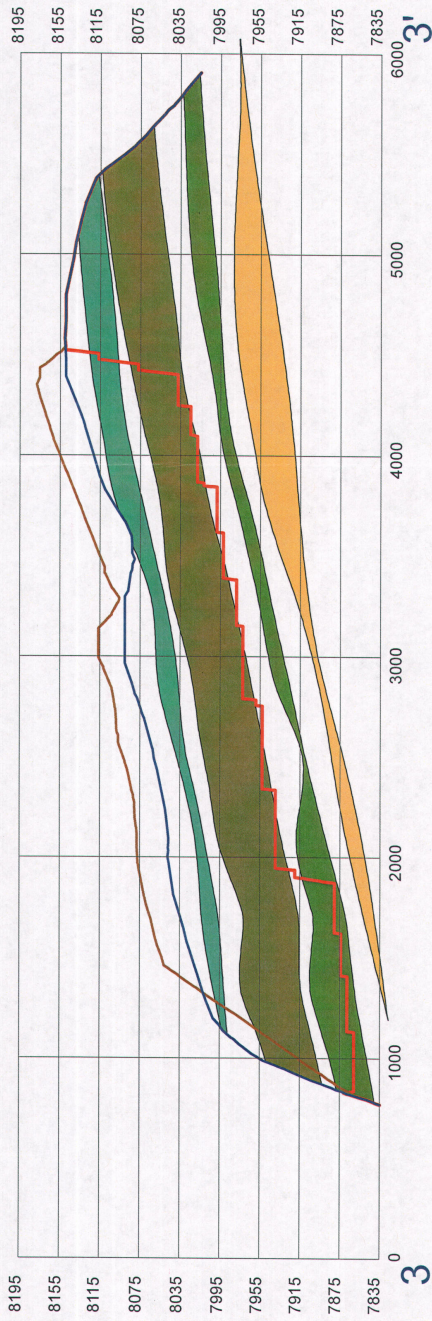


Project Location:
 Portions of T15S R24E, T16S R24E, U.S. Oil Sands, (Utah) Inc.
 U.S. Oil Sands, (Utah) Inc.
 Independent Review by J.M. on 2014-10-30

Client Project:
 U.S. Oil Sands, (Utah) Inc.
 PR-Spring Mine

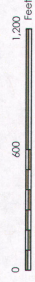
Figure No.
6b

Cross Section 2

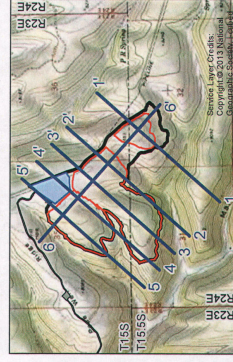


SCALE: 1 Horizontal:5 Vertical

- Legend**
- Post Mining Reclaimed Topography
 - Original Topography
 - Ultimate Pit Limit
 - Oil Sand Bed D
 - Oil Sand Bed C
 - Oil Sand Bed B
 - Oil Sand Bed A



Notes
 1. Coordinate System: NAD 1927 BLM Zone 12N
 2. Data provided from Newwest Corporation, End of Year 4, 09/18/2014, TUSO/SandA/SB4-6



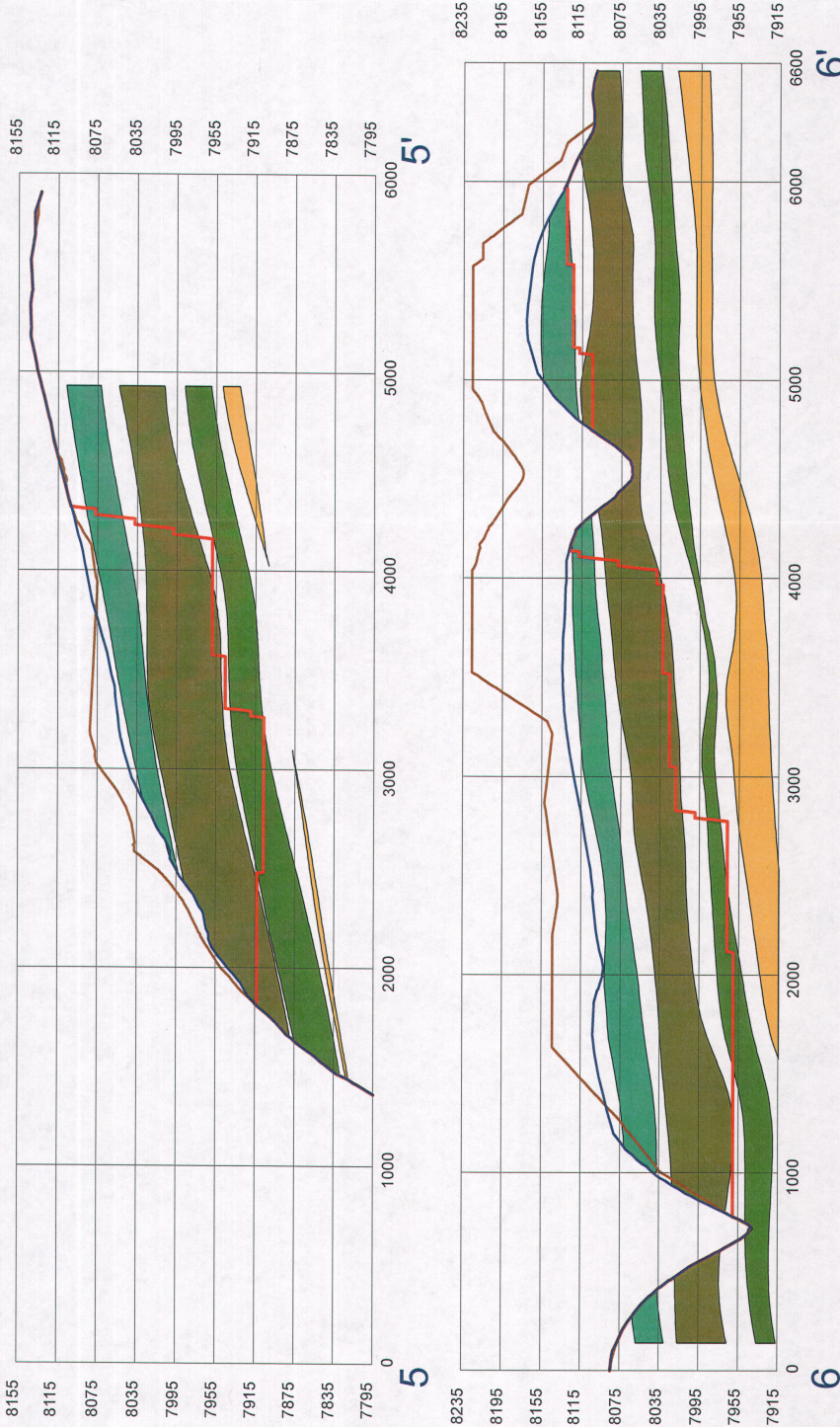
Project Location
 Portions of T15S R24E, R23E, and R22E, 6th and 7th Ranges, Uinta National Monument, Grand County, Utah
 Prepared by CLP on 2014-10-07
 Technical Review by MK on 2014-10-30
 Independent Review by JLD on 2014-11-20

Client/Project
 U.S. Oil Sands (Utah) Inc.
 PR Spring Mine

Figure No.
6c






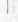





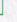


DRAFT

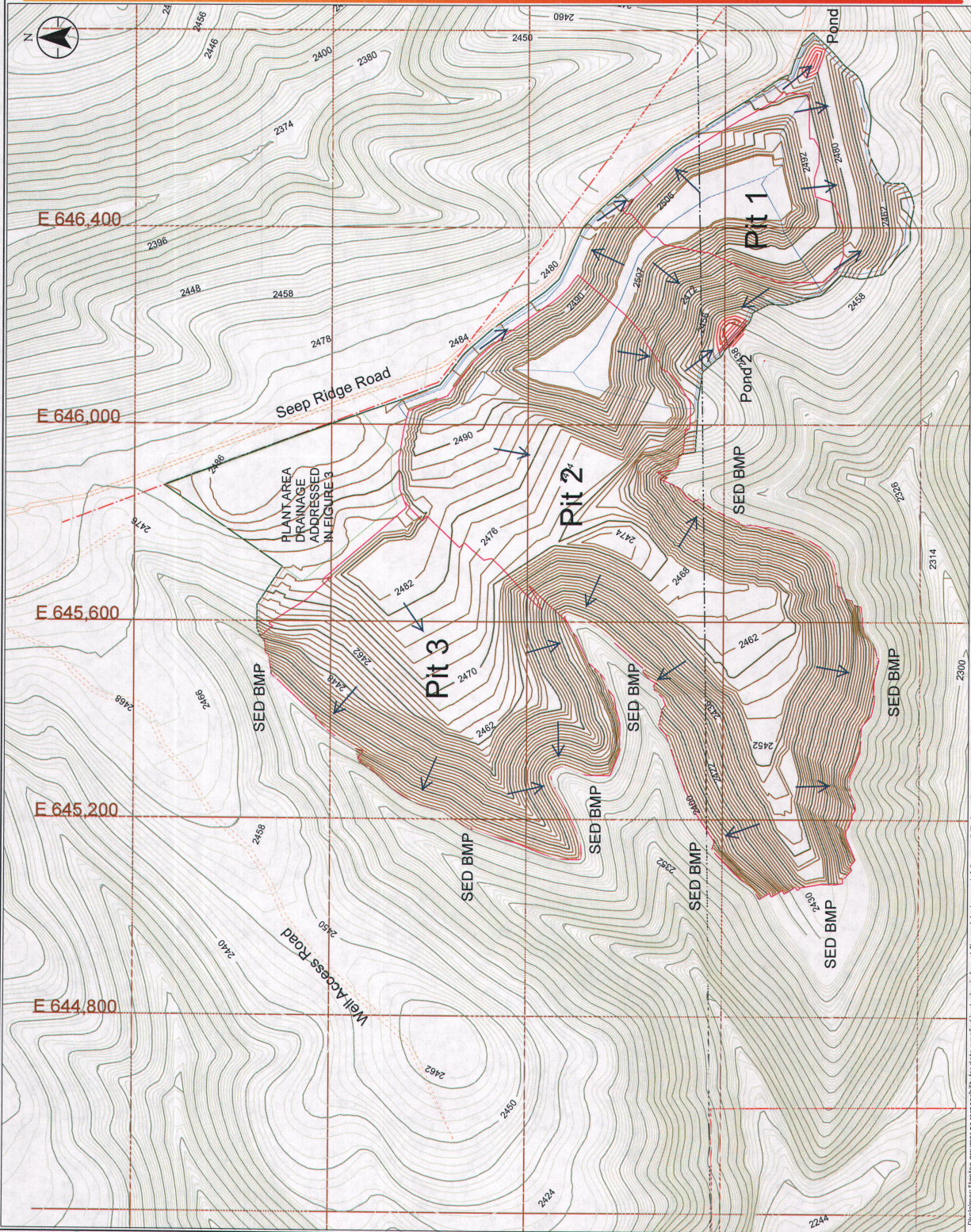
Cross Section 3



SCALE: 1 Horizontal 5 Vertical

Disclaimer: Stantec assumes no responsibility for data used in electronic format. The recipient accepts full responsibility for verifying the accuracy and completeness of the data. The recipient releases Stantec, its officers, employees, consultants and agents, from any and all claims arising in any way from the content or execution of the data.

-  DISTURBANCE LIMIT BOUNDARY
-  COUNTY LINE
-  GAS LINES
-  ROAD
-  TOPO CONTOURS (2m Interval)
-  POST MINING RECLAMATION TOPOGRAPHY CONTOURS (2m Interval)
-  PIT BOUNDARY
-  LEASE BOUNDARY
-  PLANT AREA
-  DITCH/BERM
-  SED BMP
-  DRAINAGE BOUNDARY
-  FLOW ARROWS
-  POND CONTOURS

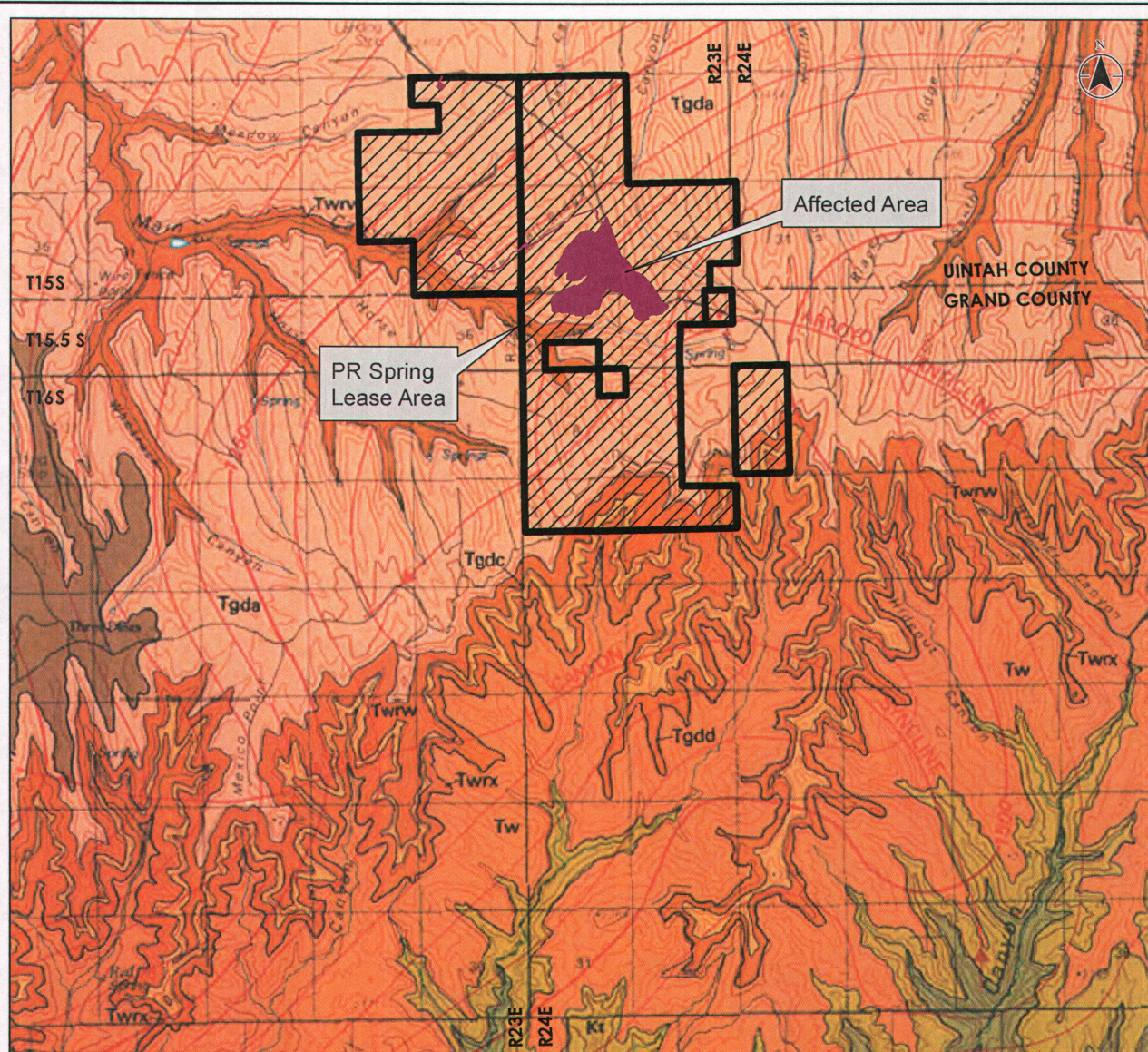


1:2,400 (A1 original document size of 11x17)

Notes
 1. Modified from Norwest, Figure S.1 Mining Drainage Control, 06/08/2014
 Project Location
 Portions of T158 B24E, R9S E
 Utah and Grand Co., UT
 Client/Project
 U.S. Oil Sands (Utah) Inc.
 PR Spring Mine
 Figure No. **7**
 File **DRAFT**

Mining Drainage Control

Disclaimer: Stantec assumes no responsibility for data supplied in electronic format. The recipient accepts full responsibility for verifying the accuracy and completeness of the data. The recipient releases Stantec, its officers, employees, consultants and agents, from and against all claims arising in any way from the content or execution of the data.

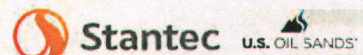
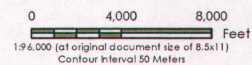


Description of Map Units

- Green River Formation (Eocene)**
- Tgpl Parachute Creek Member, lower part
 - Tgda Douglas Member
 - Tgdc Tongue c

- Wasatch Formation (Eocene and Palocene)**
- Twrw Unit w of Renegade Tongue
 - Twrx Unit x of Renegade Tongue
 - Tw Wasatch Formation, main body,
 - Kt **Tuscher Formations (Upper Cretaceous)**
 - Kf **Farrer Formation (Upper Cretaceous)**

- Contact
- Fault
- Anticline
- Syncline
- Structure Contour



Project Location 203714048
 Portions of T15S R24E, R24E Prepared by CLP on 2014-10-07
 T15.5S R24E, and T16S, R24E Technical Review by KK on 2014-10-10
 Uintah and Grand Co., UT Independent Review by LM on 2014-10-30

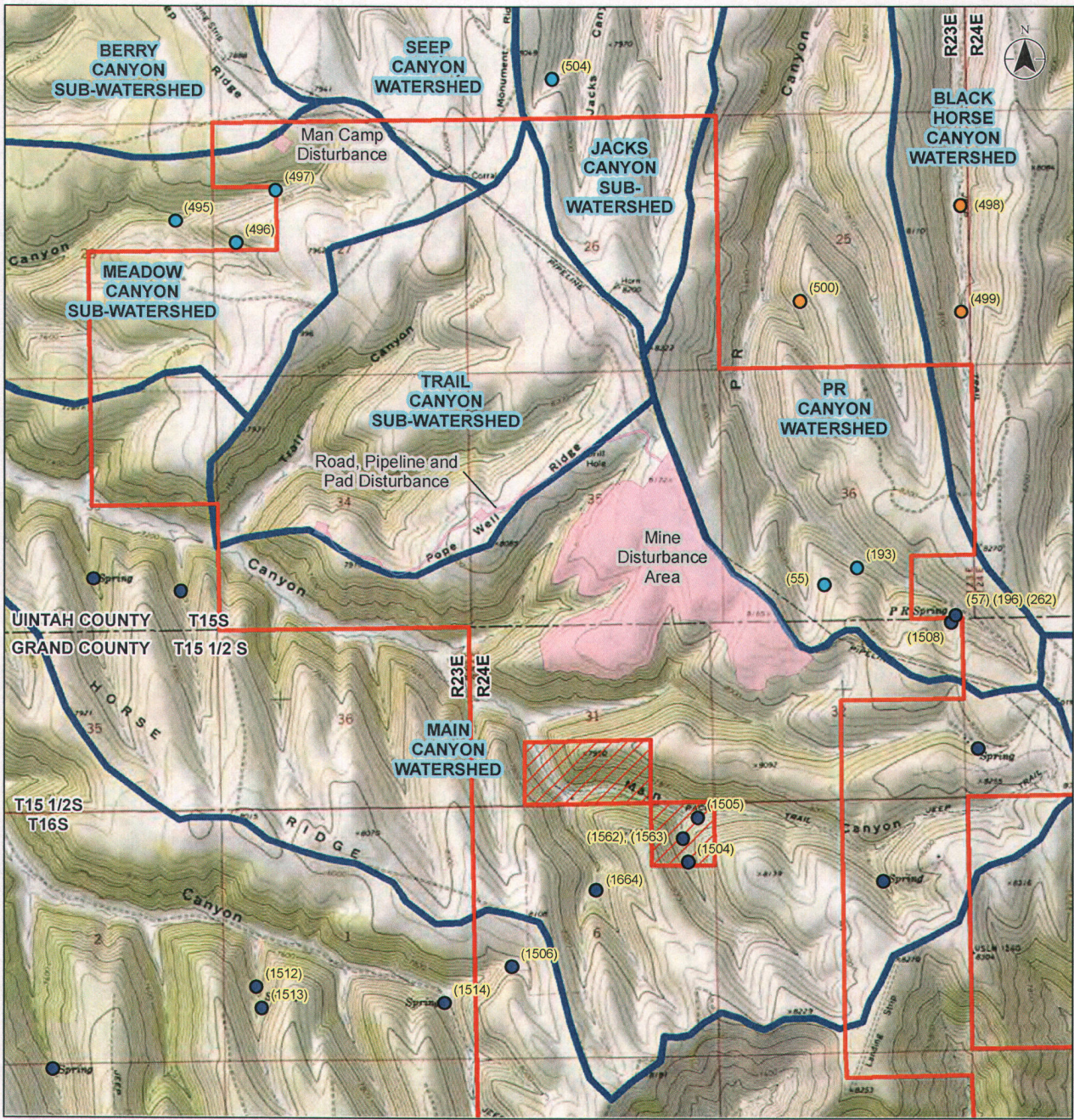
Client/Project
 U.S. Oil Sands, (Utah) Inc.
 PR Spring Mine

Figure No. **8** **DRAFT**

Geology Map

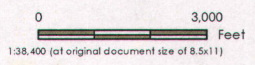
Notes
 1. Coordinate System: NAD 1927 UTM Zone 12N
 2. Geology from J. L. Guaffieri, Geologic Map of the Westwater 30'x60' Quadrangle Grand and Uintah Counties, Utah, and Garfield and Mesa Counties, Colorado, 1988

Disclaimer: Stantec assumes no responsibility for data supplied in electronic format. The recipient accepts full responsibility for verifying the accuracy and completeness of the data. The recipient releases Stantec, its officers, employees, consultants and agents, from any and all claims arising in any way from the content or provision of the data.



Legend

- PR Spring Lease Boundary
- Excluded from Lease
- Affected Area
- Watershed Boundary
- USGS Mapped Spring
- Water Right Filing for Seep or Spring
- Surface Water Right Point of Diversion
- (1506) Water Right Number



Project Location: 203714048
 Portions of T15S R24E, Prepared by CLP on 2014-10-07
 T15.5S R24E, and T16S, R24E Technical Review by KK on 2014-10-10
 Uintah and Grand Co., UT Independent Review by LM on 2014-10-30

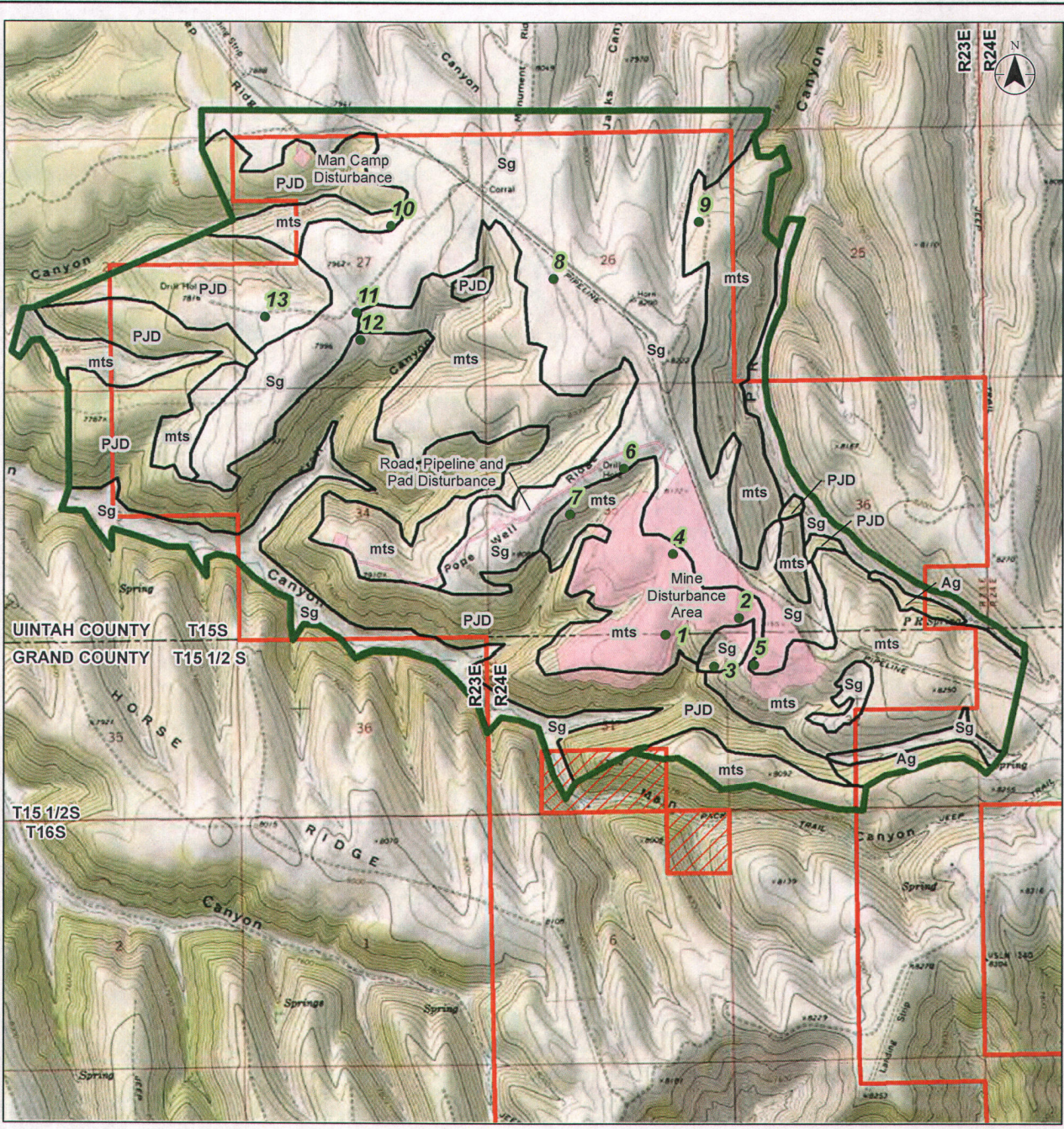
Client/Project
 U.S. Oil Sands, (Utah) Inc.
 PR Spring Mine

Figure No. **9** **DRAFT**

Title
Water Features Map

Notes
 1. Coordinate System: NAD 1983 UTM Zone 12N
 2. Service Layer Credits: Copyright © 2013 National Geographic Society, i-cubed

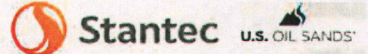
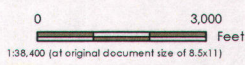
Disclaimer: Stantec assumes no responsibility for data supplied in electronic format. The recipient accepts full responsibility for verifying the accuracy and completeness of the data. The recipient releases Stantec, its officers, employees, consultants and agents, from any and all claims arising in any way from the content or provision of the data.



Legend

- PR Spring Lease Boundary
- Excluded from Lease
- Affected Area
- Limit of Vegetation Survey
- 6 Quadrat Location and Number
- Vegetation Community Boundary

- Vegetation Types**
- Ag Aspen glade
 - PJD Pinyon-Juniper-Douglas fir)
 - Sg Sagebrush - grass
 - mts Mixed tall shrub



Project Location: 203714048
 Portions of T15S R24E, Prepared by CIP on 2014-10-07
 T15.5S R24E, and T16S, R24E Technical Review by KK on 2014-10-10
 Uintah and Grand Co., UT Independent Review by LM on 2014-10-30

Client/Project:
 U.S. Oil Sands, (Utah) Inc.
 PR Spring Mine

Figure No. **10** **DRAFT**

Vegetation Communities Map

Notes
 1. Coordinate System: NAD 1983 UTM Zone 12N
 2. Service Layer Credits: Copyright © 2013 National Geographic Society, i-cubed

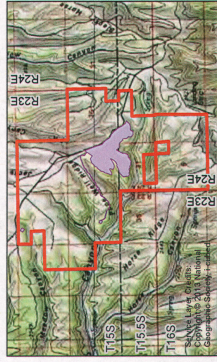
Disclaimer: Stantec assumes no responsibility for data supplied in electronic format. The recipient accepts full responsibility for verifying the accuracy and completeness of the data. The recipient releases Stantec, its officers, employees, consultants and agents, from any and all claims arising in any way from the content or provision of the data.

Legend

- Disturbance Limit Boundary
 - County Line
 - Gas Lines
 - Roads
 - Topo Contours (2 meters)
 - Pit Boundary
 - Plant
 - Well and Well Access
 - Post Mining Reclamation Topography
 - Contours (2 meters)
- Reclamation**
- Area to be graded, ripped, topsoiled, and seeded
 - Area to be graded, topsoiled, and seeded
 - Man camp area to be ripped, topsoiled, and seeded (not shown on this map)
 - Area to be seeded



Notes:
 1. MicroStation Systems, NAD 1983 UTM Zone 12N
 2. Modified from Norwest Corporation, Post Mining Reclamation Topography, 08/04/2014, T:\USOilsands\384-6

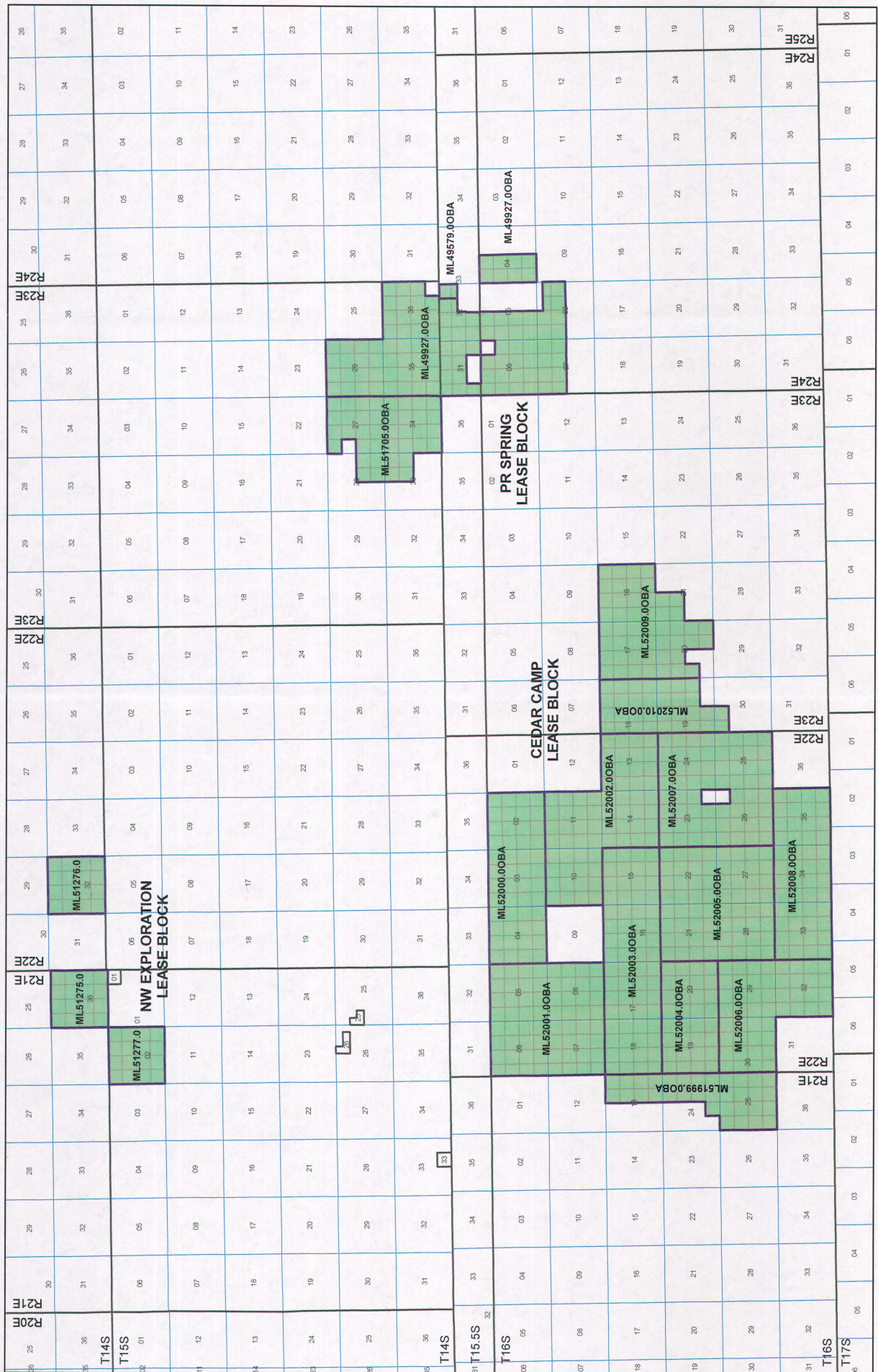


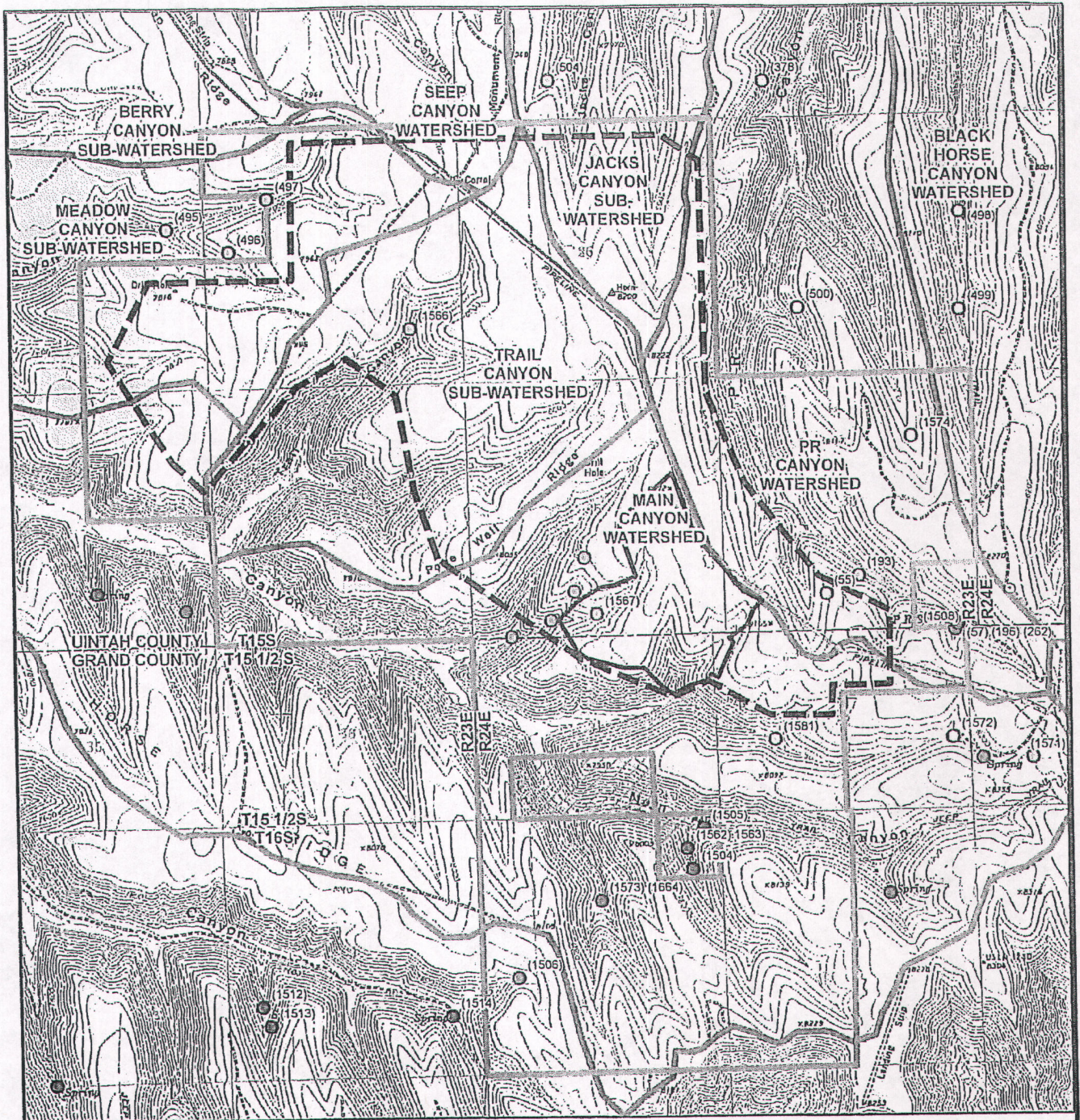
Project Location: 2037 40th St., P.O. Box 155, 155 S 155th St., 84644, Utah and Grand Co., UT
 Prepared by: 2037 40th St., P.O. Box 155, 155 S 155th St., 84644, Utah and Grand Co., UT
 Client/Project: U.S. Oil Sands, (Utah) Inc., PR Spring Mine

Figure No. **11**
 Title **Reclamation Plan**
DRAFT












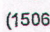
U.S. Oil Sands, (Utah) Inc. 2037 40th St., P.O. Box 155, 155 S 155th St., 84644, Utah and Grand Co., UT
 Prepared by: 2037 40th St., P.O. Box 155, 155 S 155th St., 84644, Utah and Grand Co., UT
 Client/Project: U.S. Oil Sands, (Utah) Inc., PR Spring Mine
 Figure No. 11
 Title Reclamation Plan
 DRAFT





drawings\Earth Energy\Fig7 Water Features

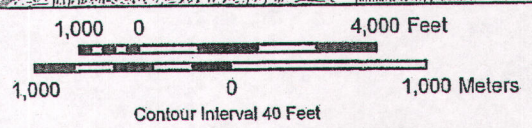
Legend

-  Earth Energy Lease Boundary
-  Property Excluded from Lease
-  Study Area Boundary
-  Affected Area
-  Watershed Boundary
-  USGS Mapped Spring
-  Water Right Filing for Seep or Spring
-  Surface Water Right Point of Diversion
-  Seep Identified in Field
-  (1506) Water Right Number

APPROVED


SEP 19 2009

DIV. OIL GAS & MINING

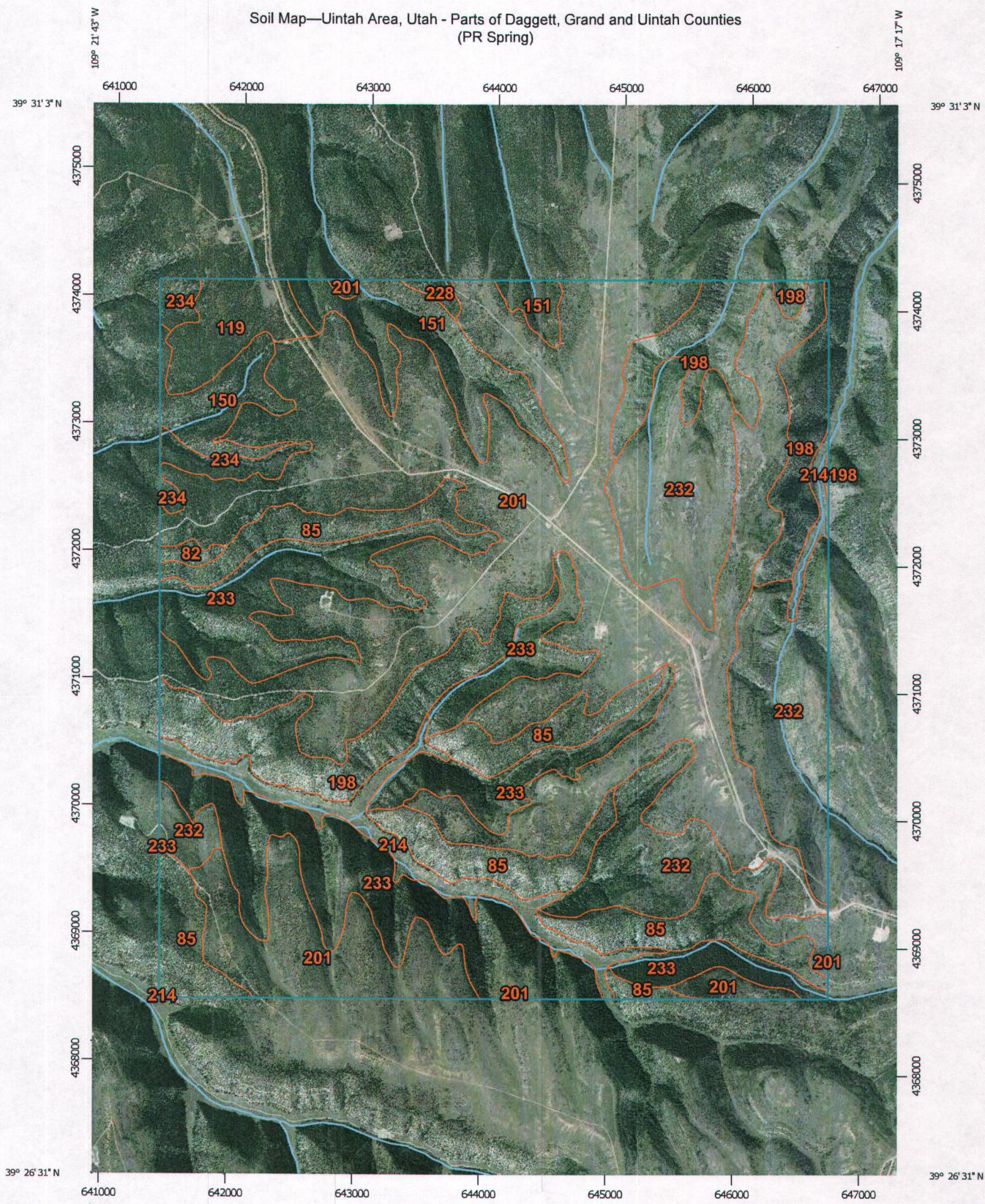


EARTH ENERGY RESOURCES, INC.
PR SPRING TAR SANDS DEVELOPMENT PROJECT

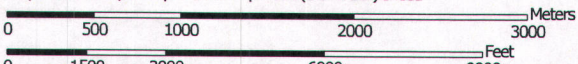
FIGURE 7
WATER FEATURES

	DESIGN BY	KK	DRAWN BY	CP	SCALE	1:36,000	
	DATE DRAWN						9/11/07
	REVISIONS						4/03/08
						10/31/08	

Soil Map—Uintah Area, Utah - Parts of Daggett, Grand and Uintah Counties
(PR Spring)



Map Scale: 1:40,900 if printed on A portrait (8.5" x 11") sheet.



Map projection: Web Mercator Corner coordinates: WGS84 Edge tics: UTM Zone 12N WGS84



Natural Resources
Conservation Service

Web Soil Survey
National Cooperative Soil Survey

9/23/2014
Page 1 of 3



Aerial view of Seep Ridge Road and project area; plant site is in central part of photo; exploration disturbance shows in various areas.



Aerial view of Seep Ridge Road and project area from north looking south; man camp shows in lower right corner of photo; plant site shows in upper central part of photo.