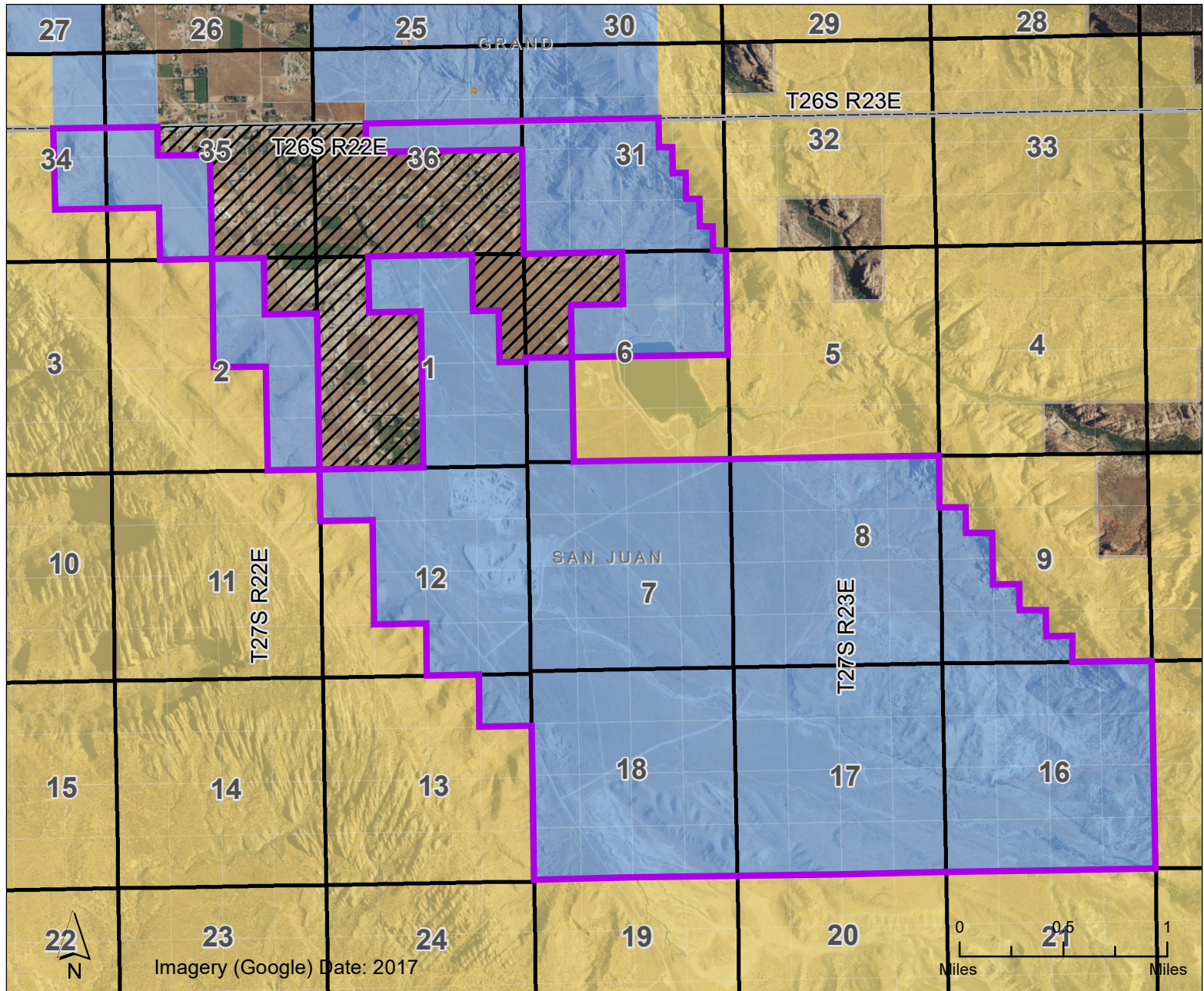


## Location of Spanish Valley Area Plan

San Juan County



Trust Lands Administration (5,245.45 acres)

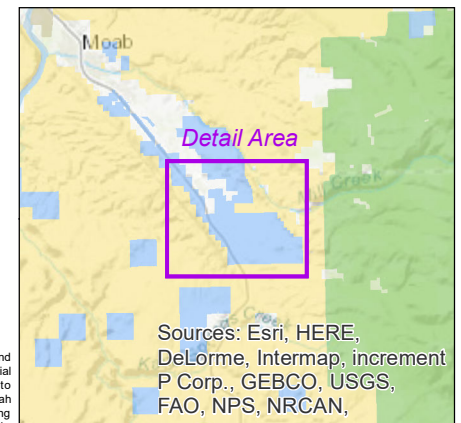
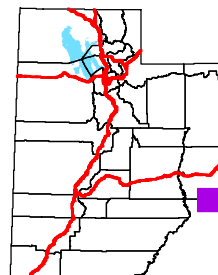
Private (Approx. 1,100 acres)

### Land Ownership and Administration

Bureau of Land Management

Private

State Trust Lands



Data represented on this map is for REFERENCE USE ONLY and is not suitable for legal, engineering, or surveying purposes. Users of this information should review or consult the primary data and information sources to ascertain the usability of the information. SITLA provides this data in good faith and shall in no event be liable for any incorrect results, or any special, indirect or consequential damages to any party, arising out of or in connection with the use or the inability to use the data hereon. Land parcels, lease boundaries and associated SITLA data layers may have been adjusted to allow for visual "best fit." The Surface Ownership Land Status data (if present) are maintained by SITLA to reflect current trust land status and surface ownership. Basemap image provided by Utah AGRC. Please Note: While SITLA seeks to verify data for accuracy and content, discrepancies may exist within the data. Acquiring the most updated SITLA ownership GIS data may require contacting the GIS staff directly 801-538-5100 or TLA-GIS@utah.gov. The SITLA GIS department welcomes your comments and concerns regarding the data and will attempt to resolve issues as they are brought to our attention. Produced: July 16, 2018 - kalestaley

Document Path: V:\GIS\GIS\_Group\Steffie\Working MXDs\Exhibit Template.mxd

Coordinate System: NAD 83 UTM Zone 12N